

Schematic Design Submittal	9/01/2023
Design Development Submittal	10/09/2023
50% Construction Documents	12/08/2023
90% Construction Document	03/08/2024
Bid Set / Permit Set	03/08/2024

Revision Schedule

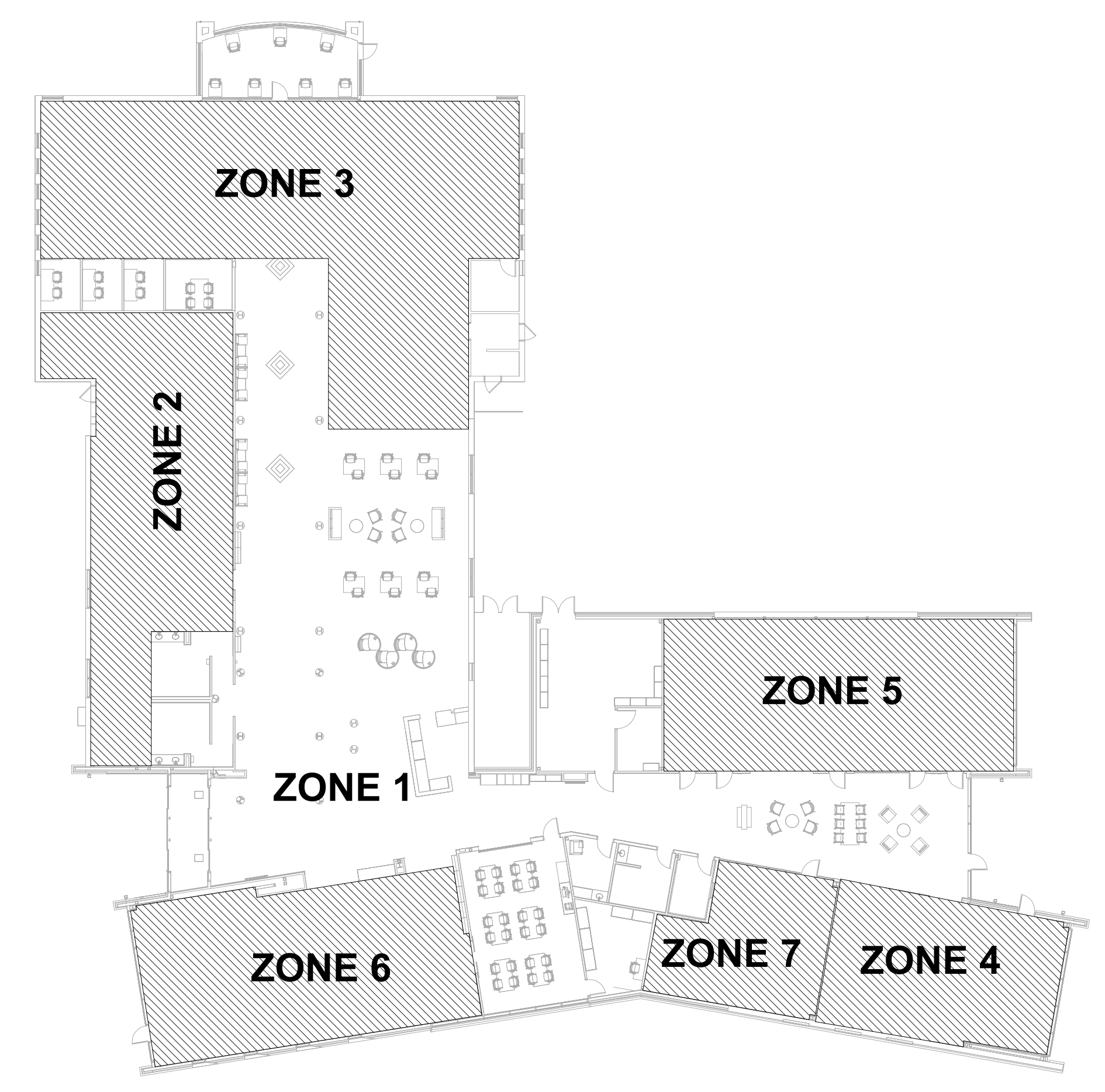
#	Description	Date
---	-------------	------

GENERAL SHEET NOTES

- COORDINATE ALL ROUGH-IN AND PATHWAY REQUIREMENTS FOR DEVICES IN CASEWORK, AND FURNITURE WITH ARCHITECTURAL DRAWINGS AND SPECIFICATIONS PRIOR TO ROUGH IN.
- COORDINATE ROUGH-IN REQUIREMENTS AND LOCATIONS FOR ALL AV DEVICES WITH CML'S AV VENDOR.
- ALL SECURITY DEVICES SHOWN ARE ROUGH-IN AND PATHWAYS ONLY. SECURITY DEVICES SHALL BE PROVIDED BY CML'S SECURITY VENDOR.
- COORDINATE FLOOR BOX LOCATIONS WITH ARCHITECTURAL FURNITURE AND ELECTRICAL POWER DRAWINGS PRIOR TO ROUGH IN.
- ALL DATA CABLES SHALL BE ROUTED IN CABLE TRAY, J-HOOKS, OR CONDUIT. CABLES SHALL BE ROUTED INCONSPICUOUSLY, PARALLEL TO BUILDING STRUCTURES AND DUCTWORK, ETC.
- PROVIDE FIRESTOPPING AROUND ALL TELECOMMUNICATIONS CONDUITS AND PENETRATIONS.
- ALL DATA CABLING SHALL BE HOMERUN TO IT CLOSET 121.
- MOUNT AT EXTERIOR SECURITY CAMERAS AT 10'-0" AFG.
- EXTEND EXISTING CABLING FROM EXISTING DEVICES TO NEW DATA 4-POST RACKS AND TERMINATE.

SHEET KEYNOTES

- PROVIDE DATA OUTLET FOR ELECTRICAL EQUIPMENT MONITORING. COORDINATE EXACT LOCATION AND REQUIREMENT WITH ELECTRICAL CONTRACTOR.
- PROVIDE TWO PORT DATA OUTLET IN 2-GANG DUAL SERVICE RECESSED TV OUTLET BOX MOUNTED AT 4" AFF FOR ROOM SCHEDULING PANEL. UTILIZE LOW VOLTAGE SIDE WITH 1-1/4" KNOCKOUTS FOR DATA CABLING AND TWO PORT FACEPLATE. REFER TO DETAIL 10 ON SHEET 1501 FOR ADDITIONAL INFORMATION.
- PROVIDE DATA OUTLET FOR BAS PANEL. COORDINATE EXACT LOCATION AND REQUIREMENT WITH CONTROLS CONTRACTOR.
- PROVIDE TWO PORT DATA OUTLET MOUNTED AT 48" AFF. FOR STUDENT SIGN IN COMPUTER.
- PROVIDE 12" W X 4" D WIRE BASKET CABLE TRAY ABOVE ACCESSIBLE CEILING, MOUNTED AT 9'-0" AFF.
- PROVIDE 12" W X 4" D WIRE BASKET CABLE TRAY ABOVE ACCESSIBLE CEILING, MOUNTED AT 12'-0" AFF.
- PROVIDE NEW WALL MOUNTED WEATHERPROOF WIRELESS ACCESS POINT AND DATA CABLING, USING SAME ROUGH-IN AND PATHWAY AS PREVIOUS DEVICE AND CABLING. REFER TO SHEET TD101 FOR DEMO WORK IN THIS LOCATION.
- PROVIDE (3) 4" CONDUIT SLEEVES FOR HORIZONTAL CABLING THROUGH WALL, MOUNTED AT 12'-0" AFF.
- 4-GANG FLOOR BOX FOR POWER AND DATA. PROVIDE THE SAME NUMBER OF CAT6 CABLES AND PORTS AS INDICATED BY THE SUB-SCRIPT TO THE FLOOR BOX. PROVIDE (1) DATA FURNITURE WHIP FROM FLOOR BOX THROUGH SYSTEMS FURNITURE TO WORKSTATION DEVICE. REFER TO ELECTRICAL DRAWINGS FOR MORE INFORMATION ABOUT FLOOR BOXES.
- PROVIDE DATA OUTLET FLUSH MOUNT IN CEILING FOR PEOPLE COUNTER SYSTEM. COORDINATE EXACT REQUIREMENTS WITH OWNER PRIOR TO ROUGH-IN.
- EMERGENCY LOCK DOWN PUSH BUTTON MOUNTED UNDERNEATH THE COUNTER PROVIDED BY CML'S SECURITY VENDOR. LOCKDOWN SIGNALS SHALL LOCK PUBLIC ENTRY DOORS AND SIGNALS BE TRANSMITTED TO 911 AND CML'S MAIN SECURITY CONTROL CENTER.
- PROVIDE ROUGH-IN FOR DOORBELL CHIME. PROVIDE 1" CONDUIT TO BOOK DROP AND STAFF ENTRANCE DOORBELLS.
- PROVIDE DATA OUTLET FLUSH MOUNT IN CEILING FOR OWNER PROVIDED THEFT DETERRENT SYSTEM. COORDINATE EXACT REQUIREMENTS WITH OWNER PRIOR TO ROUGH-IN.
- MAINTAIN EXISTING FLOOR BOX AND DATA FURNITURE WHIP TO EXISTING CATALOG COMPUTER.
- PROVIDE (1) HIGH DATA/HDMI OUTLET MOUNTED AT 72" FOR DRAW ALIVE PROJECTION SYSTEM, AND PROVIDE (1) LOW DATA/HDMI OUTLET MOUNTED AT 42" FOR DRAW ALIVE INPUT STATION. HIGH AND LOW HDMI'S SHALL BE CONNECTED TOGETHER WITH A 1-1/4" CONDUIT.
- PROVIDE AMPLIFIER ABOVE CEILING IN AN ACCESSIBLE LOCATION FOR PENDANT MOUNTED SPEAKER DOME SYSTEM. PROVIDE (3) #18AWG SPEAKER CONDUCTORS FROM AMPLIFIER AND (3) #18AWG MICROPHONE CONDUCTORS TO SPEAKER DOME. COORDINATE WITH SPEAKER MANUFACTURER FOR EXACT REQUIREMENTS. REFER TO ELECTRICAL FLOOR SHEETS FOR POWER REQUIREMENTS.
- MOUNT PA SPEAKER FLUSH INTO SOFFIT.
- PROVIDE (8) DATA DROPS FROM FLOOR BOX ROUTED THROUGH SYSTEMS FURNITURE TO DATA DEVICES IN SYSTEMS FURNITURE.
- PROVIDE (9) DATA DROPS FROM FLOOR BOX ROUTED THROUGH SYSTEMS FURNITURE TO DATA DEVICES IN SYSTEMS FURNITURE.
- PROVIDE A RECESSED 2 GANG ROUGH-IN FOR CML PROVIDED SHORT THROW PROJECTOR AT 8'-2" AFF. PROVIDE 1" CONDUIT FROM ROUGH-IN TO ABOVE ACCESSIBLE CEILING. COORDINATE EXACT REQUIREMENTS WITH CML'S AV VENDOR.
- PROVIDE DATA OUTLET IN 2-GANG DUAL SERVICE RECESSED TV OUTLET BOX. UTILIZE LOW VOLTAGE SIDE WITH 1-1/4" KNOCKOUTS FOR DATA AND AV CABLING. REFER TO DETAIL 10 ON SHEET 1501 FOR ADDITIONAL INFORMATION.
- PROVIDE DATA OUTLET FOR CML PROVIDED AV CABINET. COORDINATE EXACT REQUIREMENTS WITH CML'S AV VENDOR PRIOR TO ROUGH-IN.



1 FIRST FLOOR PLAN - TELECOMMUNICATIONS
1/8" = 1'-0"

2 FIRST FLOOR PLAN - P/A PAGING ZONES
3/64" = 1'-0"

CML Barnett
Branch
Addition/Renovation

3434 E Livingston Ave.
Columbus, OH 43227



FIRST FLOOR PLAN -
TELECOM

T101
03/08/2024

22/160