

To: All Interested Vendors

From: Wanda Dixon  
Procurement Analyst

Date: August 4, 2023

Subject: Addendum No. 3  
RFP 23-014 – AV Equipment Sourcing, Configuration and Installation  
Services

Question and Answer  
Modifications and Additional Documentation

---

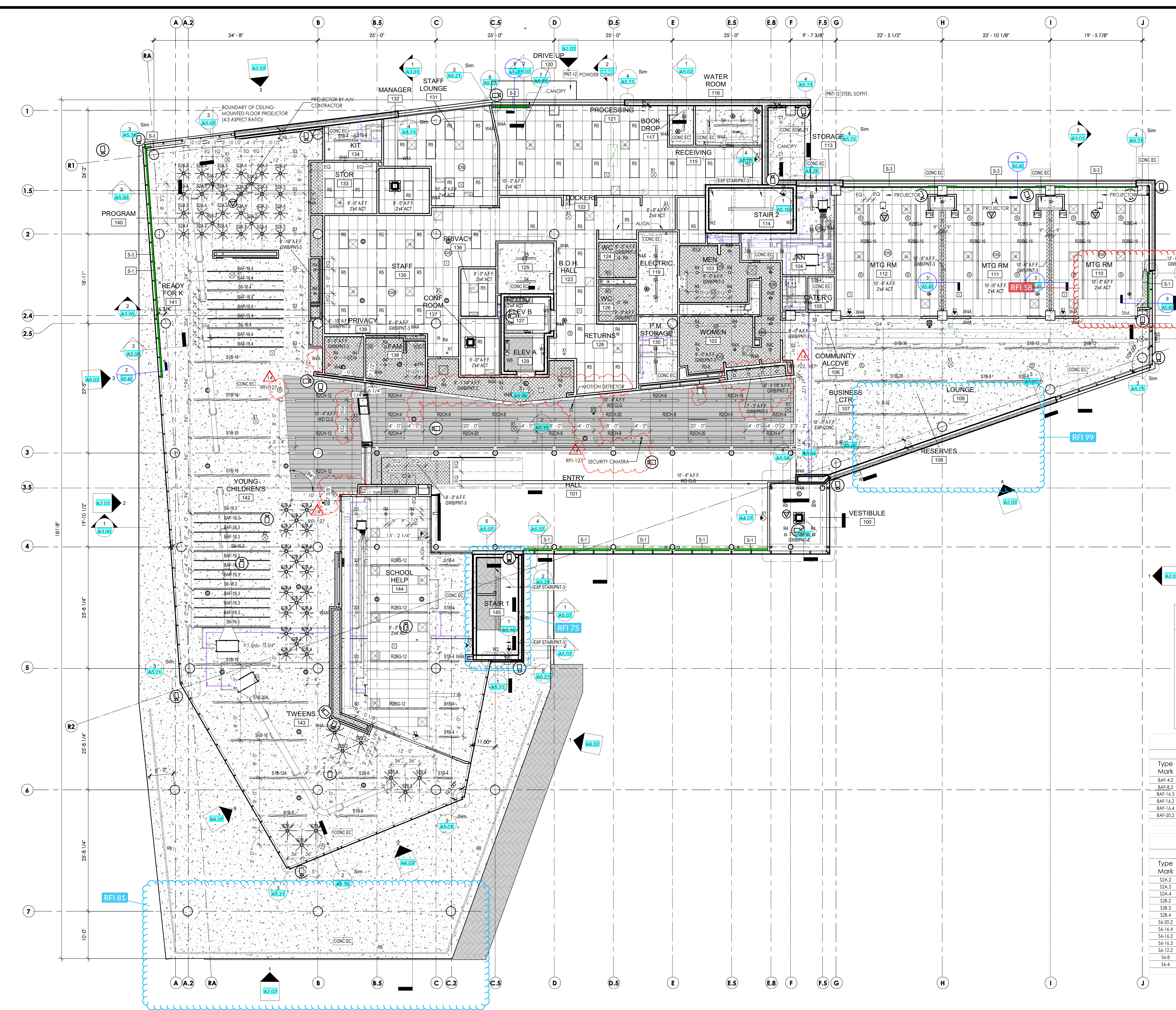
## **Part II. Question and Answer**

### **Children's Programming**

- Q1: Is this to be one wireless channel with which either microphone options can be used? Or are two wireless channels being requested?
- A1: Both microphones should be able to be used at the same time, not only one microphone.
- Q2: What type of microphones are being requested and in what quantities? Handheld, lavalier or headworn?
- A2: Lavalier and headworn
- Q3: Does the audio from the dynamic floor system need to tie into the ceiling speakers? The dynamic floor system comes with its own speakers.
- A3: The loop system should tie into the ceiling speakers that you would be installing. There will be other speakers in the space, but those are for paging. The speakers provided by the AV package will tie into the paging speakers. This will not be completed by the AV vendor.
- Q4: What make and model of cart is being provided?
- A4: This is an owner provided item. (See pdf)
- Q5: What make and model TV is being requested? We cannot find a 60" Amazon-branded Fire TV.
- A5: The mobile cart can accommodate a 65" fire TV. Please quote the 65" instead of the 60".
- Q6: What make and model TV is being requested? Any 65" with a Fire Stick attached to the back? Or a TV with Fire TV built-in?
- A6: An internet search brought up multiple fire tvs that are 65".
- Q7: Is a mount being provided? If so, what make and model?

- A7: A wall mount is not being provided and should be included in your proposal.
- Q8: Is this two wireless channels with one type of microphone each? Or two wireless channels with a handheld and a lavalier available for each (only one microphone can be used per channel at one time)?
- A8: Multiple microphones should be able to be used at one time.
- Q9: Need clarification here. Is this just an HDMI wall plate for sending video the projector, or is this an HDMI wall plate as well as an audio wall plate?
- A9: The wall plate connection would be able to send information to the projector.
- Q10: Study Room – What make and model TV is being requested? Any 43” with a Fire Stick attached to the back, or a TV with Fire TV built-in?
- A10: Fire TV built-in. We do not want to have to attach a fire stick.
- Q11. In the Teen area, what make and model TV is being requested? Any 75” with a Fire Stick attached to the back, or a TV with Fire Stick built-in?
- A11: Fire TV built in. We do not want to have it attached a Fire Stick.
- Q12: Is a TV mount being provided in the Teen area?
- A12: Wall mount is not being provided and should be included in your proposal.
- Q13: Can the IT closets on both floors be used? Is there a pathway between the two closets?
- A13: The IT closet on the second floor is being proposed for the AV rack. We would prefer racks not be installed in storage spaces.
- Q14: Do all spaces have 2x2 ceiling tiles for the ceiling? Can we have a full set of prints made available?
- A14: Ceiling material is in drawings A1.11 and A1.12
- Q15: Can the boundaries of the school help, children’s programming, and teen areas be clarified to ensure proper speaker coverage?
- A15: See attached pdf.





### CEILING MATERIALS

	WOOD SLAT SYSTEM (WD SLAT)
	ACOUSTIC STEEL DECK EXPOSED CONSTRUCTION (STL EC/PNT-3)
	GYPSON WALL BOARD-FIRE RATED (GWB-R/PNT-3)
	GYPSON WALL BOARD (GWB/PNT-3)
	GYPSON WALL BOARD (GWB/PNT-4)
	GYPSON WALL BOARD (GWB/PNT-5)
	GYPSON WALL BOARD (GWB/PNT-8)
	CONCRETE EXPOSED CONSTRUCTION (CONC EC)
	ACOUSTICAL CEILING TILE (2'X4' ACT)

### RCP GENERAL LEGEND

	RETURN AIR GRILL
	SUPPLY DIFFUSER
	10'-0\"/>
	SPEAKER
	WIRELESS ACCESS POINT

### RCP LIGHTING FIXTURES

	OPEN DOWNLIGHT
	OPEN WALL WASH DOWN LIGHT
	SUSPENDED LIGHT FIXTURE
	RECESSED LIGHT FIXTURE
	LINEAR WALL WASH FIXTURE
	LINEAR ACOUSTIC FIXTURE
	EXIT SIGN
	SPEAKER

### SHADE TYPES

S-1	NEW SINGLE MOTORIZED SOLAR/PRIVACY ROLLER SHADE
S-2	NEW SINGLE MANUAL SOLAR/PRIVACY ROLLER SHADE
S-3	NEW SINGLE MOTORIZED SOLAR/PRIVACY ROLLER SHADE
S-4	NEW SINGLE MANUAL SOLAR/PRIVACY ROLLER SHADE

### ACOUSTIC BAFFLES

Type Mark	Family	Type
BAF-4.2	S6 LightArt-Acoustic Static Baffles	Slim Baffle - 48\"/>
BAF-8.2	S6 LightArt-Acoustic Static Baffles	Slim Baffle - 96\"/>
BAF-16.3	S6 LightArt-Acoustic Static Baffles	Slim Baffle - 192\"/>
BAF-16.2	S6 LightArt-Acoustic Static Baffles	Slim Baffle - 192\"/>
BAF-16.4	S6 LightArt-Acoustic Static Baffles	Slim Baffle - 192\"/>
BAF-20.2	S6 LightArt-Acoustic Static Baffles	Slim Baffle - 240\"/>

### ACOUSTIC LIGHTS

Type Mark	Family	Type
S2A.2	S2 Echo Pendant	Echo E358-C (Nickel)
S2A.3	S2 Echo Pendant	Echo E358-C (Admiral)
S2A.4	S2 Echo Pendant	Echo E358-C (Steel Blue)
S2B.2	S2 Echo Pendant	Echo E478-C (Nickel)
S2B.3	S2 Echo Pendant	Echo E478-C (Admiral)
S2B.4	S2 Echo Pendant	Echo E478-C (Steel Blue)
S6-20.2	S6 LightArt-Acoustic Static Baffles	Static Light - 240\"/>
S6-16.4	S6 LightArt-Acoustic Static Baffles	Static Light - 192\"/>
S6-16.2	S6 LightArt-Acoustic Static Baffles	Static Light - 192\"/>
S6-16.3	S6 LightArt-Acoustic Static Baffles	Static Light - 192\"/>
S6-12.2	S6 LightArt-Acoustic Static Baffles	Static Light - 144\"/>
S6-8	S6 LightArt-Acoustic Static Baffles	Static Light - 96\"/>
S6-4	S6 LightArt-Acoustic Static Baffles	Static Light - 48\"/>

### NOTES ABOUT TYPICAL LOCATIONS FOR FIXTURES

- Fixtures shown centered in ACT ceiling tiles are to be centered in the tiles UNO. For this note, fixtures refer to light fixtures, sprinkler heads, speakers, and wireless access point.
- Light fixtures in monolithic ceilings are centered on the room and equally spaced UNO.
- Light fixtures in monolithic ceilings are centered on windows UNO.
- See star drawings for location of light fixtures in stair shaft.
- Provide indicated sconce light fixture at each stair landing.

### NOTES ABOUT TREATMENT OF EXPOSED CEILING ELEMENTS

- Not all required access panels are shown. Where access panel locations are shown, locate the related above ceiling item so that it can be effectively accessed thereby.
- Not all required fixtures are shown on the RCP - without limitation, refer to the following for additional required items: exit signs and emergency lighting on electrical drawings, access panels on HVAC drawings, stair light fixtures on stair drawings, sprinkler heads on FP drawings, etc.

### NOTES ABOUT TREATMENT OF EXPOSED CEILING ELEMENTS

- All elements exposed in open ceiling, or above ceiling but otherwise visible from interior or from exterior (e.g. through windows) are to be painted.

### NOTES ABOUT CEILING CONSTRUCTION

- Maintain fire rated construction of shafts above ceilings at transitions between differing configurations floor to floor and at top and bottom of shaft. All locations.
- Centering grid and/or score patterns are to be centered in the room UNO.
- Refer to Sheet C1.40 FINISH SCHEDULE AND LEGENDS for more information on ceiling finishes.

### REVISION SCHEDULE

#	DATE	REVISION DESCRIPTION
1	07.05.2022	Addendum 1
3	07.11.2022	Addendum 3
5	8.10.2022	Bulletin 2
6	9.16.2022	Bulletin 3
7	10.07.2022	Bulletin 4
8	10.25.2022	Bulletin 5
9	11.18.2022	Bulletin 6
10	01.06.2023	Bulletin 7
11	01.24.2023	Bulletin 8
12	02.17.2023	Bulletin 9
13	05.02.2023	Bulletin 10
14	06.24.2023	Bulletin 11

### PROJECT NAME:

**CML REYNOLDSBURG**  
1402 BRICE ROAD  
REYNOLDSBURG, OHIO 43068

100% CONSTRUCTION DOCUMENTS  
ISSUED FOR BIDDING AND PERMIT

ISSUE DATE: 02 10 2023



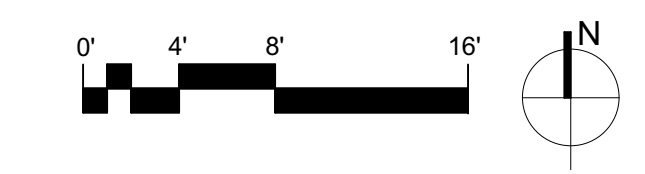
EXP. 12-31-2022

LEVEL 1 RCP

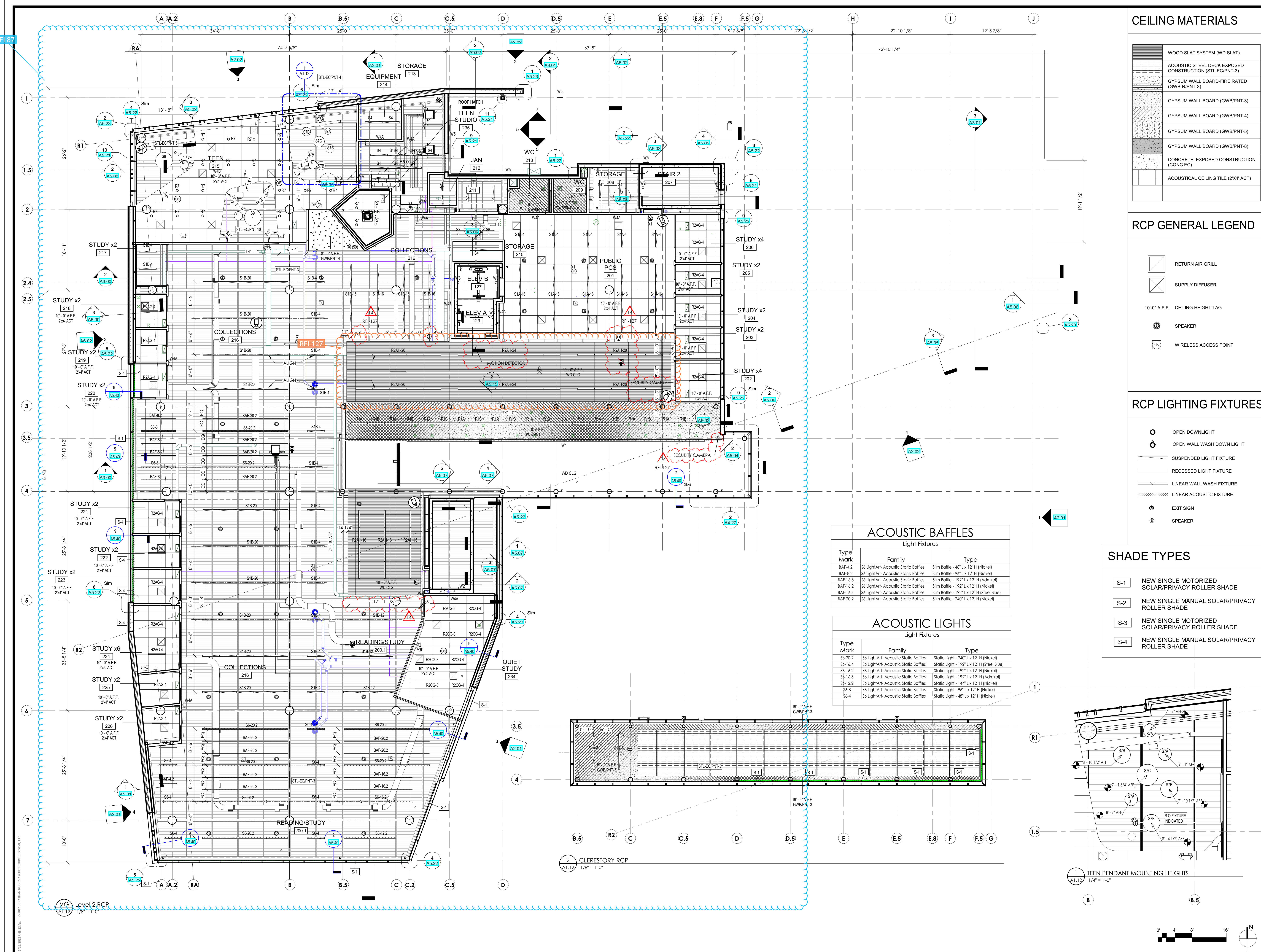
**A1.11**

© 2023 JONATHAN BARNES ARCHITECTURE & DESIGN, LTD.

Level 1 RCP  
1/8" = 1'-0"







**CEILING MATERIALS**

	WOOD SLAT SYSTEM (WD SLAT)
	ACOUSTIC STEEL DECK EXPOSED CONSTRUCTION (STL-EC/PNT-3)
	GYPSUM WALL BOARD-FIRE RATED (GWB-R/PNT-3)
	GYPSUM WALL BOARD (GWB/PNT-3)
	GYPSUM WALL BOARD (GWB/PNT-4)
	GYPSUM WALL BOARD (GWB/PNT-5)
	GYPSUM WALL BOARD (GWB/PNT-8)
	CONCRETE EXPOSED CONSTRUCTION (CONC EC)
	ACOUSTICAL CEILING TILE (2'x4' ACT)

**RCP GENERAL LEGEND**

- RETURN AIR GRILL
- SUPPLY DIFFUSER
- 10'-0" A.F.F. CEILING HEIGHT TAG
- SPEAKER
- WIRELESS ACCESS POINT

**RCP LIGHTING FIXTURES**

- OPEN DOWNLIGHT
- OPEN WALL WASH DOWN LIGHT
- SUSPENDED LIGHT FIXTURE
- RECESSED LIGHT FIXTURE
- LINEAR WALL WASH FIXTURE
- LINEAR ACOUSTIC FIXTURE
- EXIT SIGN
- SPEAKER

**SHADE TYPES**

- S-1 NEW SINGLE MOTORIZED SOLAR/PRIVACY ROLLER SHADE
- S-2 NEW SINGLE MANUAL SOLAR/PRIVACY ROLLER SHADE
- S-3 NEW SINGLE MOTORIZED SOLAR/PRIVACY ROLLER SHADE
- S-4 NEW SINGLE MANUAL SOLAR/PRIVACY ROLLER SHADE

**NOTES ABOUT TYPICAL LOCATIONS FOR FIXTURES**

- Fixtures shown centered in ACT ceiling tiles are to be centered in the tiles UNO. For this note, fixtures refer to light fixtures, sprinkler heads, speakers, and wireless access point.
- Light fixtures in monolithic ceilings are centered on the room and equally spaced UNO.
- Light fixtures in monolithic ceilings are centered on windows UNO.
- See stair drawings for location of light fixtures in stair shaft.
- Provide indicated sconce light fixture at each stair landing.

**NOTES ABOUT TREATMENT OF EXPOSED CEILING ELEMENTS**

- Not all required access panels are shown. Where access panel locations are shown, locate the related above ceiling item so that it can be effectively accessed thereby.
- Not all required fixtures are shown on the RCP - without limitation, refer to the following for additional required items: exit signs and emergency lighting on electrical drawings, access panels on HVAC drawings, stair light fixtures on stair drawings, sprinkler heads on FP drawings, etc.

**NOTES ABOUT TREATMENT OF EXPOSED CEILING ELEMENTS**

- All elements exposed in open ceiling, or above ceiling but otherwise visible from interior or from exterior (e.g. through windows) are to be painted.

**NOTES ABOUT CEILING CONSTRUCTION**

- Maintain fire rated construction of shafts above ceilings at transitions between differing configurations floor to floor and at top and bottom of shaft. All locations.
- Ceiling grid and/or score patterns are to be centered in the room UNO.
- Refer to Sheet C3.1 and FINISH SCHEDULE AND LEGENDS for more information on ceiling finishes.

**REVISION SCHEDULE**

#	DATE	REVISION DESCRIPTION
1	07.05.2022	Addendum 1
3	07.11.2022	Addendum 3
6	9.16.2022	Bulletin 3
9	11.18.2022	Bulletin 6
10	01.06.2023	Bulletin 7
13	05.02.2023	Bulletin 10
14	06.24.2023	Bulletin 11

**PROJECT NAME:**  
**CML REYNOLDSBURG**  
 1402 BRICE ROAD  
 REYNOLDSBURG, OHIO 43068

100% CONSTRUCTION DOCUMENTS  
 ISSUED FOR BIDDING AND PERMIT

**ISSUE DATE:** 02 10 2023



Jonathan Barnes  
 Architectural and Design  
 243 N 5th Street, Suite 200  
 Columbus, OH 43215  
 614.228.7311  
 www.jbad.com

EXP. 12-31-2022

LEVEL 2 RCP

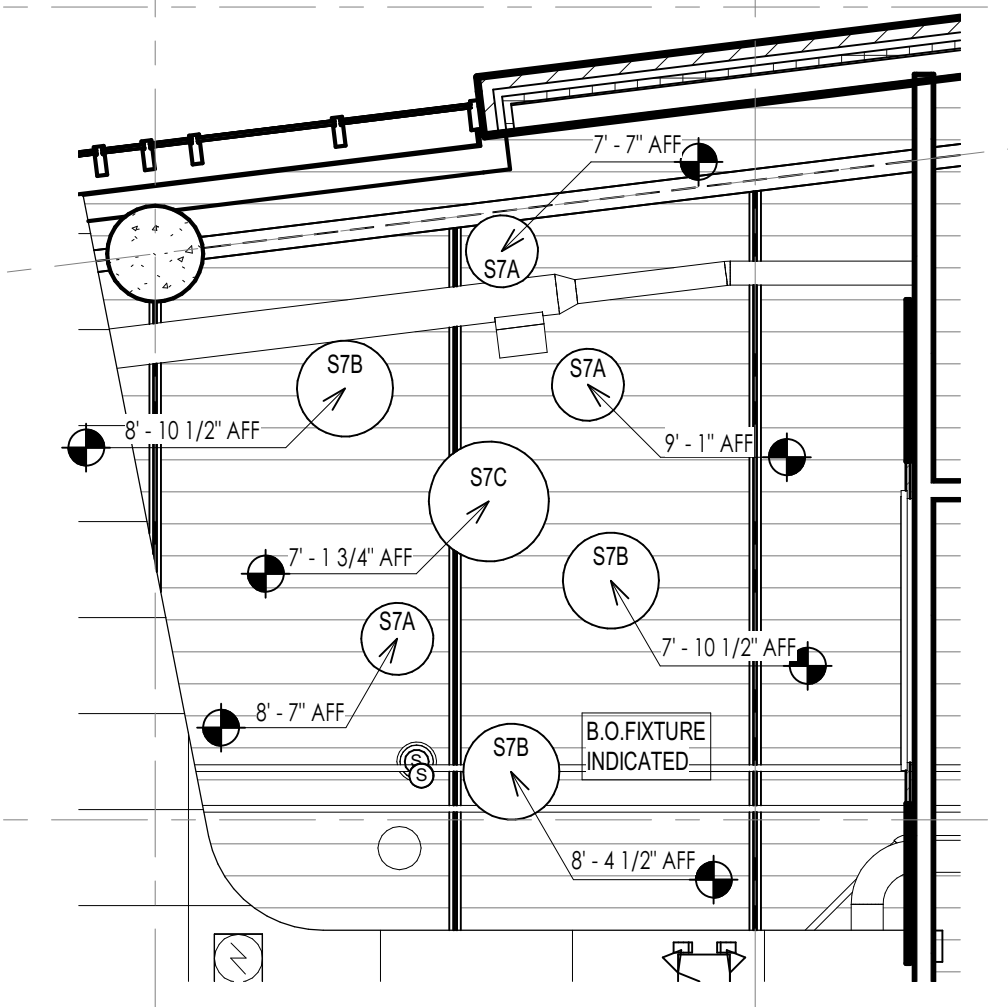
**A1.12**

**ACOUSTIC BAFFLES**  
 Light Fixtures

Type Mark	Family	Type
BAF-4.2	S6 LightAri- Acoustic Static Baffles	Slm Baffle - 48" L x 12" H (Nickel)
BAF-8.2	S6 LightAri- Acoustic Static Baffles	Slm Baffle - 96" L x 12" H (Nickel)
BAF-16.3	S6 LightAri- Acoustic Static Baffles	Slm Baffle - 192" L x 12" H (Admiral)
BAF-16.2	S6 LightAri- Acoustic Static Baffles	Slm Baffle - 192" L x 12" H (Nickel)
BAF-16.4	S6 LightAri- Acoustic Static Baffles	Slm Baffle - 192" L x 12" H (Steel Blue)
BAF-20.2	S6 LightAri- Acoustic Static Baffles	Slm Baffle - 240" L x 12" H (Nickel)

**ACOUSTIC LIGHTS**  
 Light Fixtures

Type Mark	Family	Type
S6-20.2	S6 LightAri- Acoustic Static Baffles	Static Light - 240" L x 12" H (Nickel)
S6-16.4	S6 LightAri- Acoustic Static Baffles	Static Light - 192" L x 12" H (Steel Blue)
S6-16.2	S6 LightAri- Acoustic Static Baffles	Static Light - 192" L x 12" H (Nickel)
S6-16.3	S6 LightAri- Acoustic Static Baffles	Static Light - 192" L x 12" H (Admiral)
S6-12.2	S6 LightAri- Acoustic Static Baffles	Static Light - 144" L x 12" H (Nickel)
S6-9	S6 LightAri- Acoustic Static Baffles	Static Light - 96" L x 12" H (Nickel)
S6-4	S6 LightAri- Acoustic Static Baffles	Static Light - 48" L x 12" H (Nickel)



CLERESTORY RCP  
 1/8" = 1'-0"

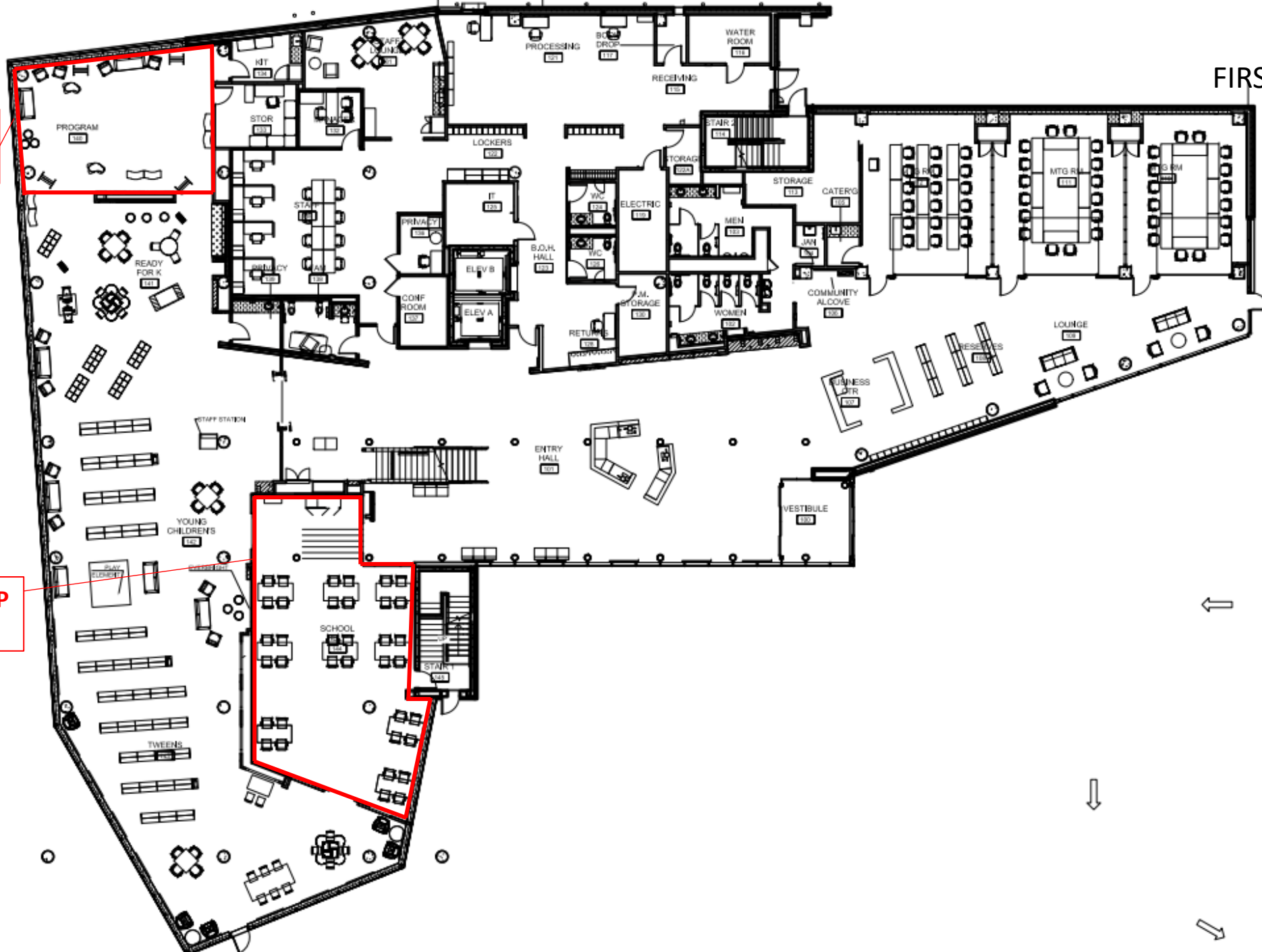




FIRST FLOOR

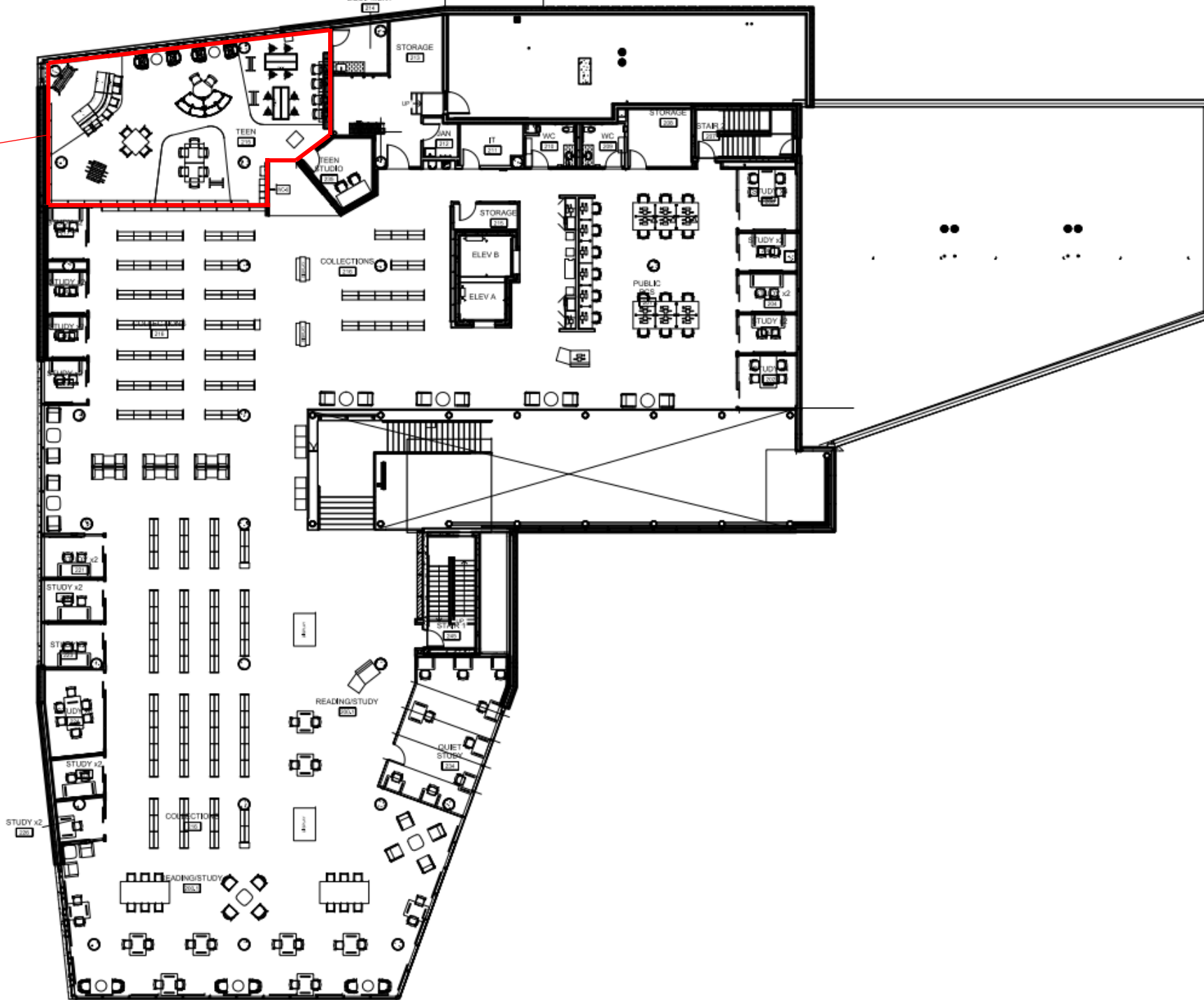
**PROGRAM SPACE**

**SCHOOL HELP CENTER**



SECOND FLOOR

TEEN SPACE





# Zori<sup>®</sup> Mobile Monitor Stand and Whiteboards

Zori represents Enwork's latest collection of complete tables and multipurpose learning and training products.

Inspired by current trends in working and learning styles, Zori Mobile Monitor Stands and Whiteboards blend portable work tools with a versatile design to encourage group discussions at any point throughout the day. Zori Mobile Monitor Stands and Whiteboards allow teams to quickly connect, create, and share their best work.



### Monitor Stand

Simplify meetings with intentional storage, technological capabilities, and convenient portability all in one product.

72"H x 36", 48", or 60"W. Cabinets are 22"D and non-locking.



### Whiteboard w/ Cabinet

This multipurpose writing surface easily supports collaborative work environments, turning blank spaces into idea generators!

72"H x 36", 48", or 60"W magnetic porcelain or non-magnetic back-painted glass. Cabinets are 22"D and non-locking.



### Whiteboard

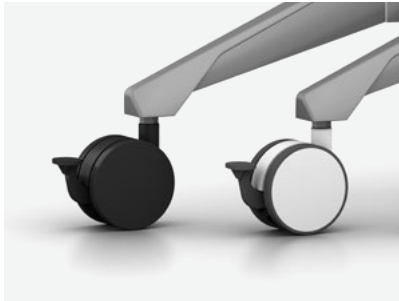
Enable group work and collaboration wherever needed. Zori markerboards allow groups to come together and quickly engage.

72"H x 36" or 48"W magnetic porcelain or non-magnetic back-painted glass.



## Product Details

- Back of Monitor Stand available with tackable fabric, glass, or porcelain white boards.
- Available as a 2-sided glass or porcelain whiteboard with cabinets.
- Available as a 2-sided glass or porcelain whiteboard.
- Monitor stands fit up to a 32", 49", or 65" monitor depending on product configuration.
- Monitor stands include a single Ellora power/data unit and a single HDMI corded coupler.
- Glass whiteboards are non-magnetic.
- Cabinets are 22"D, non-locking, and available in 15 standard laminates with sleek pulls.
- Casters are available in black or white with grey trim.



Casters are available in black or white with grey trim.



Cabinets are non-locking and feature sleek pulls.



2-sided monitor stand with tackable fabric, and a glass or porcelain whiteboard back.



Monitor stands include a single Ellora power/data unit and a single HDMI corded coupler.



Monitor stands fit monitors sized 39", 49", and 65" depending on the width of the product.



Storage cabinets are 22"D and available in all standard laminates.





enwork.com  
1.800.815.7251

ENWORK

Specifications are subject to change without prior notice.

Rev 03.2023