



**GENERAL NOTES:**

- A. FIELD VERIFY EXACT LOCATIONS OF ALL DEVICES AND EQUIPMENT. REFER TO DRAWINGS AND SPECIFICATIONS OF OTHER CONSTRUCTION WORK TRADES FOR ADDITIONAL ELECTRICAL WORK INCLUDED IN DIVISIONS 27 AND 28.
- B. COORDINATE ALL ROUGH-IN REQUIREMENTS OF DEVICES IN CASEWORK, FURNITURE AND EQUIPMENT LOCATIONS WITH ARCHITECTURAL DRAWINGS AND SPECIFICATIONS PRIOR TO ROUGH-IN.
- C. COORDINATE ALL FINAL DEVICE COLOR AND FINISH SELECTIONS WITH ARCHITECT AND OWNER.
- D. ALL DATA CABLES SHALL BE ROUTED IN CABLE TRAY, J-HOOKS OR CONDUIT. CABLES SHALL BE ROUTED INCONSPICUOUSLY PARALLEL TO BUILDING STRUCTURES AND DUCTWORK, ETC.
- E. ALL WIRE IN CONDUITS (INCLUDING FLEX CONDUIT) SHALL BE CONCEALED WHERE POSSIBLE. IF SURFACE CONDUIT IS USED IT MUST FIRST BE APPROVED BY A/E AND PAINTED TO MATCH WALL/CEILING FINISHES.
- F. COORDINATE LOCKDOWN FUNCTIONS WITH ARCHITECTURAL DOOR HARDWARE SPECIFICATIONS FOR INTEGRATION IN THE ACCESS CONTROL SYSTEM.
- G. ALL DATA CABLING SHALL BE HOMERUN TO IT ROOM 162.
- H. COORDINATE ALL AV DEVICE LOCATIONS AND MOUNTING HEIGHTS WITH CML AV VENDOR (NEW ERA).
- I. PROVIDE SEALS AROUND ALL CONDUITS AND ALL ELECTRICAL PENETRATIONS.
- J. COORDINATE FINAL FLOOR BOX LOCATION WITH ARCHITECTURAL FURNITURE PLANS.
- K. MOUNT ALL EXTERIOR SECURITY CAMERAS AT

**SHEET KEYNOTES CONTINUED:**

9. PROVIDE DATA OUTLET FOR BAS CONTROL PANEL. COORDINATE EXACT REQUIREMENTS WITH HVAC CONTROLS CONTRACTOR.
10. PROVIDE SINGLE DATA PORT CONNECTION FOR SMART METERING ON MAIN ELECTRICAL DISTRIBUTION. COORDINATION FINAL LOCATION WITH ELECTRICAL CONTRACTOR.
11. 12" W X 4" D WIRE MESH CABLE TRAY MOUNTED AT 14'-6" AFF.
12. PROVIDE EMERGENCY LOCKDOWN PUSH BUTTON MOUNTED UNDERNEATH THE COUNTER. LOCKDOWN SIGNALS SHALL LOCK PUBLIC ENTRY DOORS AND SIGNALS SHALL BE TRANSMITTED TO 911 AND CML'S MAIN SECURITY CONTROL CENTER.
13. PROVIDE DATA OUTLET FOR STAFF TIMECLOCK.
14. PROVIDE FLOOR BOX TO SERVE DEVICES LOCATED IN WELCOME SERVICE DESK CASEWORK. PROVIDE (1) 6-PORT DATA OUTLET IN FLOOR BOX WITH 10 PATCH CORDS OF DEVICES ON FLOOR PLAN AND (1) PASS THROUGH OUTLET FOR SECURITY CABLING TO DEVICES IN DESK.
15. PROVIDE A RECESSED 2-GANG ROUGH-IN FOR CML PROVIDED SHORT THROW PROJECTOR AT 9'-7" AFF. PROVIDE 1" CONDUIT FROM ROUGH-IN TO ABOVE ACCESSIBLE CEILING. COORDINATE EXACT REQUIREMENTS WITH CML'S AV VENDOR.
16. PROVIDE (1) HIGH DATA/HDMI OUTLET MOUNTED AT 72" FOR DRAW ALIVE PROJECTOR SYSTEM AND (1) LOW DATA/HDMI OUTLET MOUNTED AT 42" FOR DRAW ALIVE INPUT STATION. HIGH AND LOW HDMI'S SHALL BE CONNECTED TOGETHER WITH A 1-1/4" CONDUIT.

**SHEET KEYNOTES:**

1. 4-GANG FLOOR BOX FOR POWER AND DATA. PROVIDE THE SAME NUMBER OF CAT6 CABLES AND PORTS AS INDICATED BY THE SUB-SCRIPT. REFER TO ELECTRICAL DRAWINGS FOR MORE INFORMATION ABOUT FLOOR BOXES.
2. PROVIDE TWO DATA OUTLET IN 2-GANG DUAL SERVICE RECESSED TV OUTLET BOX MOUNTED AT 44" AFF FOR ROOM SCHEDULING PANEL. UTILIZE LOW VOLTAGE SIDE WITH 1-1/4" KNOCKOUTS FOR DATA CABLING AND TWO PORT FACEPLATE. REFER TO T-501 FOR ADDITIONAL INFORMATION.
3. PROVIDE A WEATHERPROOF WAP MOUNTED TO THE EXTERIOR OF THE BUILDING, MOUNTED 12'-0" AFF.
4. 12" W X 4" D WIRE MESH CABLE TRAY MOUNTED AT 14'-8" AFF.
5. PROVIDE WIRELESS PANIC BUTTON DEVICE ONTO MOBILE STAFF CART FOR THE AREA. PROVIDED BY CML'S SECURITY VENDOR.
6. PROVIDE (3) 4" CONDUIT SLEEVES FOR HORIZONTAL CABLING THROUGH WALL.
7. PROVIDE DATA OUTLET FLUSH MOUNT IN CEILING FOR PEOPLE COUNTER SYSTEM. COORDINATE EXACT REQUIREMENTS WITH OWNER PRIOR TO ROUGH-IN.
8. PROVIDE DATA OUTLET FOR FACIP. COORDINATE EXACT REQUIREMENTS WITH FIRE ALARM PROVIDER PRIOR TO ROUGH-IN.



SEAL  
 PROGRESS PRINTS  
 NOT FOR  
 CONSTRUCTION

**Bostwick  
 Design  
 Partnership**  
 Cleveland, OH | Erie, PA | Miami, FL | Pittsburgh, PA  
 www.bostwickdesign.com

BDP NO. 22007

**COLUMBUS  
 METROPOLITAN  
 LIBRARY**  
 CANAL WINCHESTER  
 BRANCH

ISSUED/ REVISION FOR	DATE
SCHEMATIC DESIGN	12 MAY 2023
INTERIM DD	27 OCT 2023
DESIGN DEVELOPMENT	08 DEC 2023
INTERIM CD	13 MAR 2024

FIRST FLOOR PLAN -  
 TECHNOLOGY

SHEET NO. T101

ALL SPEAKERS TO BE TIED INTO OWNER CMAR PROVIDED PAGING SYSTEM

Study A Room 137  
 - 43" SAMSUNG TV WALL MOUNTED WITH HDMI WALL CONNECTION  
 - AIRMEDIA

Small Meeting Room 140  
 - 65" SAMSUNG TV ON OWNER PROVIDED CART WITH HDMI WALL CONNECTION  
 - LOOP HEARING ASSIST SYSTEM  
 - MICROPHONES  
 - SPEAKERS

Small Meeting Room 141  
 - 65" SAMSUNG TV ON OWNER PROVIDED CART WITH HDMI WALL CONNECTION  
 - LOOP HEARING ASSIST SYSTEM  
 - MICROPHONES  
 - SPEAKERS

Large Meeting Room 142  
 - ULTRA SHORT THROW PROJECTOR  
 - LOOP HEARING ASSIST SYSTEM  
 - MICROPHONES  
 - WALL CONTROL PANEL  
 - WALL CONNECTIONS  
 - SPEAKERS  
 - AIRMEDIA

Children's Room 130  
 - CONTROL PANEL FOR SOUND SYSTEM  
 - MICROPHONES  
 - SPEAKERS

Children's Room 130  
 - INSTALL OWNER PROVIDED DRAW ALIVE SYSTEM (PROJECTOR/HDMI CONNECTION/ ETC)

Multipurpose Room 120  
 - CONTROL PANEL FOR SOUND SYSTEM  
 - MICROPHONES  
 - SPEAKERS

Teen Room 110  
 - 65" GAMING SAMSUNG TV ON OWNER PROVIDED CART

- 65" SAMSUNG TV ON WALL (DISCOVERY BOARD)

- AV RACK IN ROOM 162

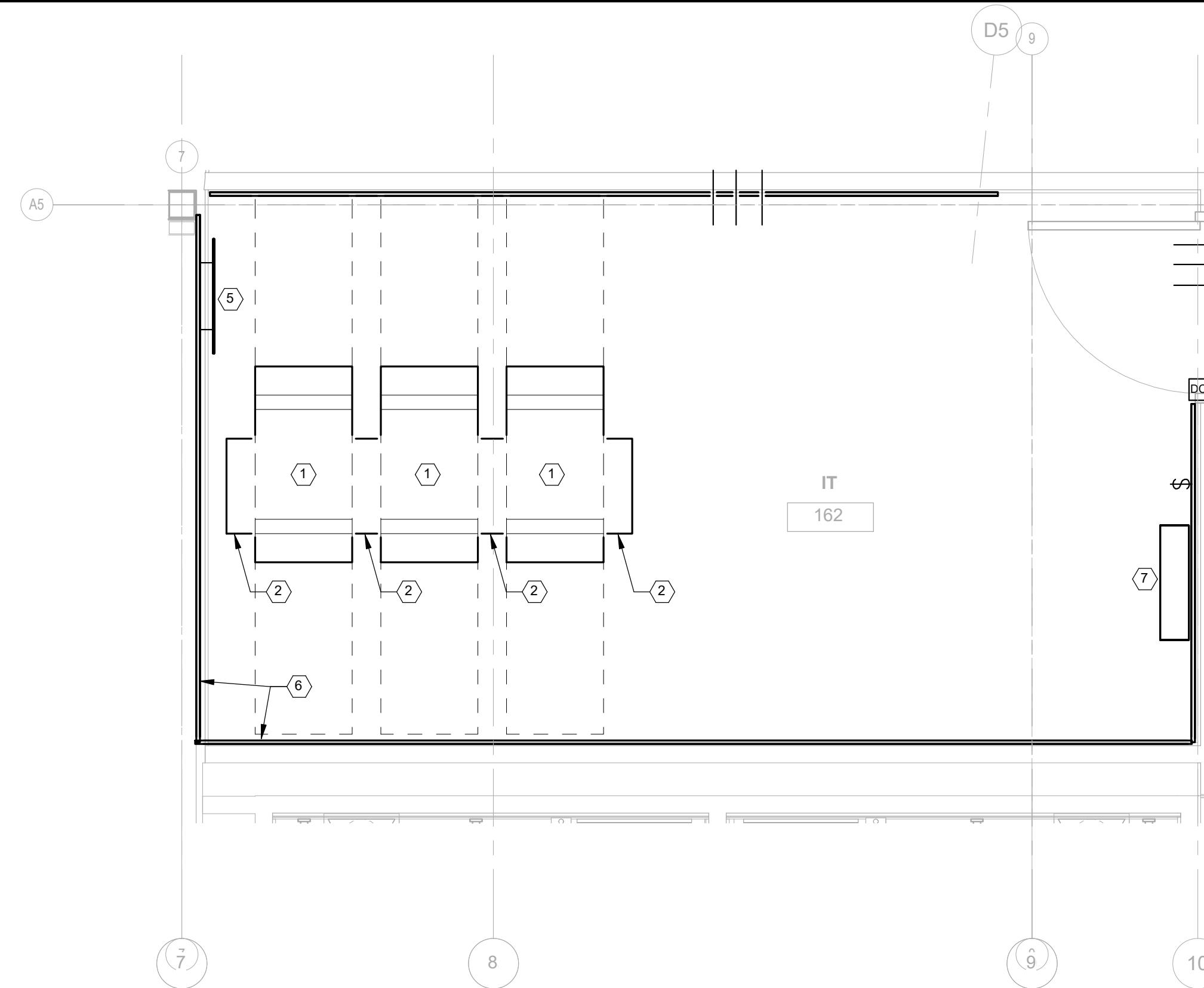
3/12/2024 10:10:51 AM Address: Docu/22007 CML Canal Winchester Branch/CLN - 03 - MEPT.rvt

**GENERAL NOTES**

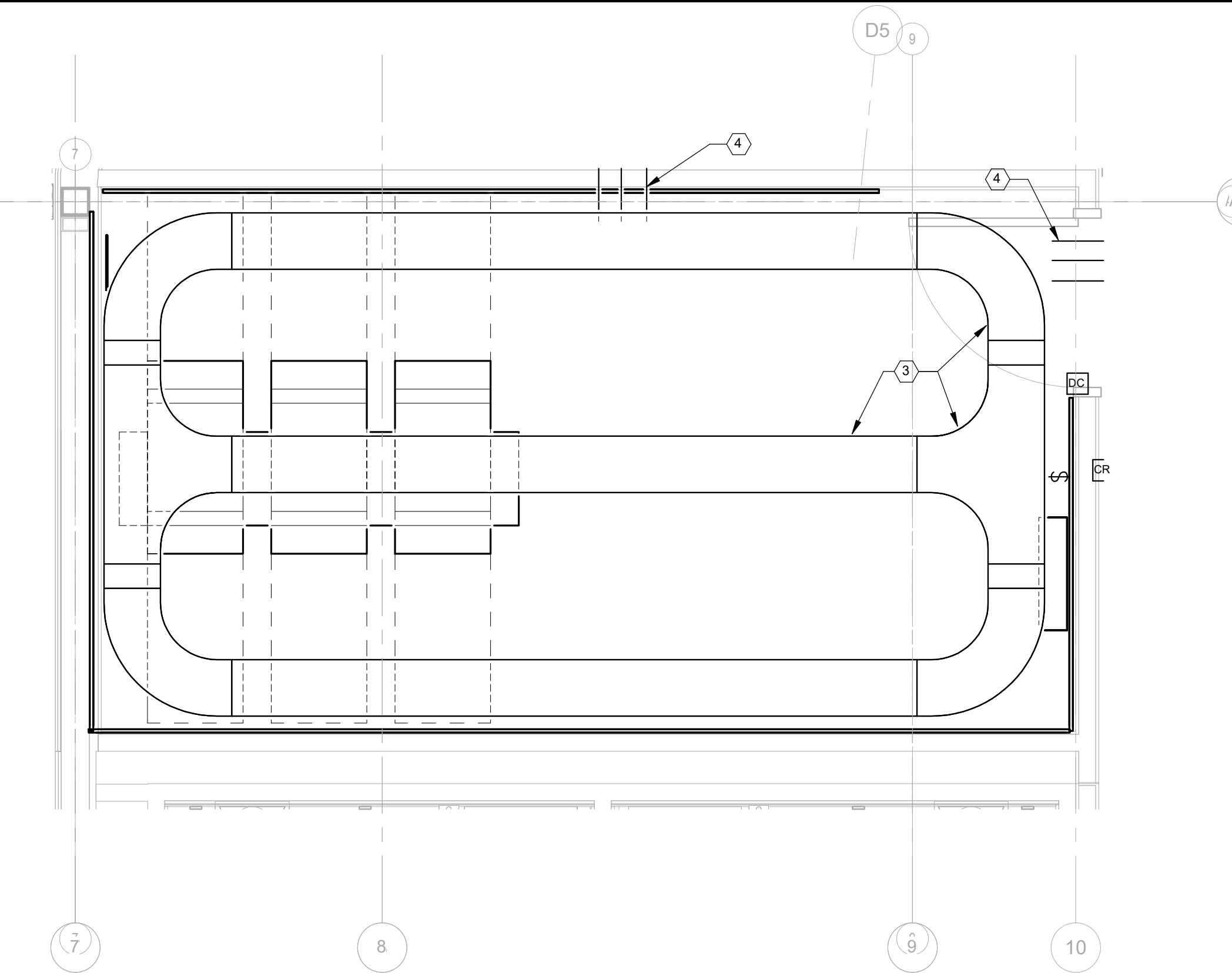
ALL SECURITY DEVICES SHOWN ARE ROUGH-INS AND PATHWAYS ONLY. SECURITY DEVICES SHALL BE PROVIDED BY CML'S SECURITY VENDOR.

**SHEET NOTES**

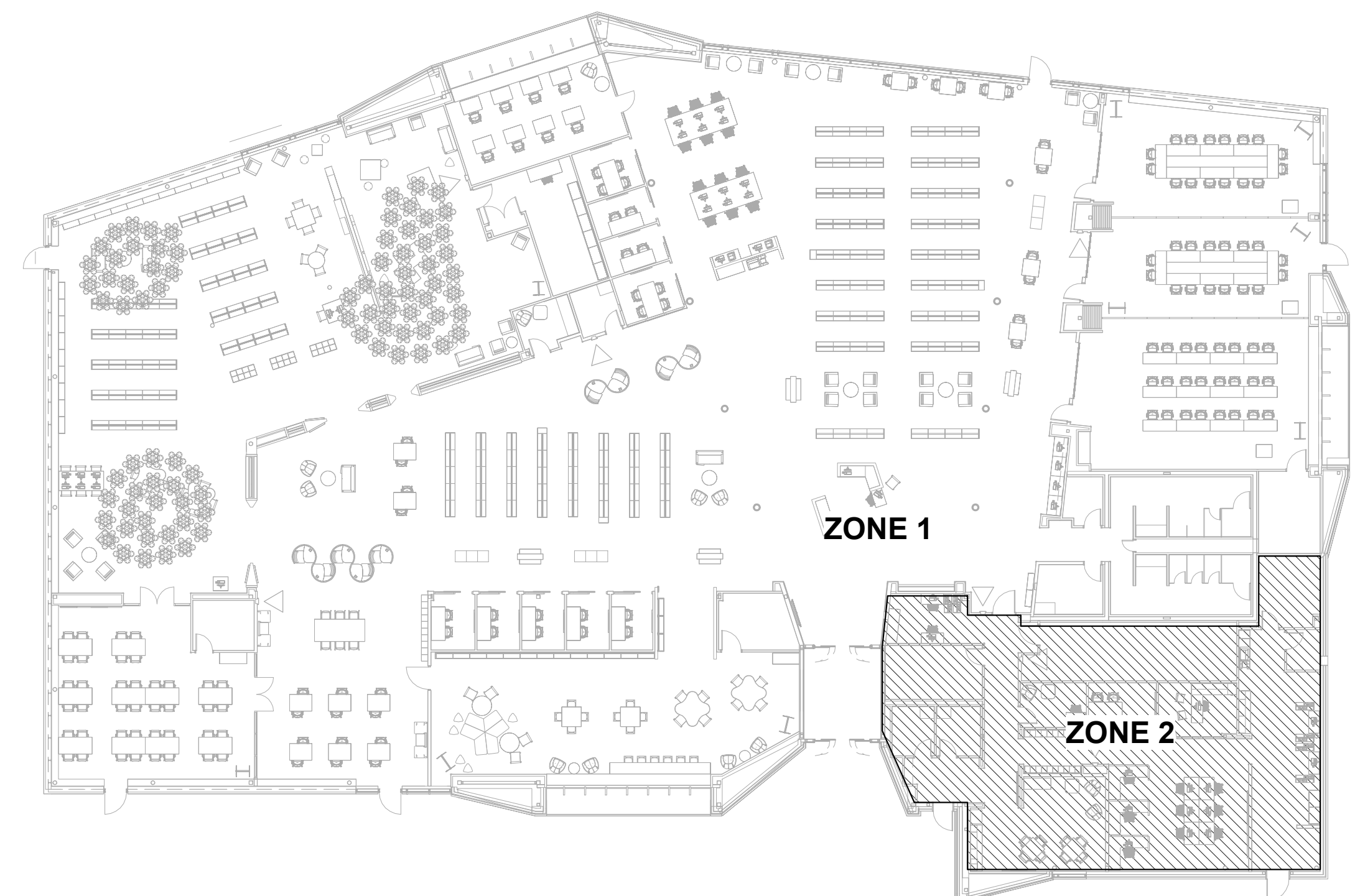
- 84" H X 20" W X 30" D 4-POST RACK WITH EIA STANDARD 19" RACK RAILS. 45 RACK UNITS OF MOUNTING SPACE.
- 6" WIDE VERTICAL WIRE MANAGEMENT ON EACH SIDE OF THE RACK.
- PROVIDE 12" W LADDER RACK CABLE TRAY FOR TELECOMMUNICATIONS CABLING MOUNTED AT 10'-0" AFF.
- (3) 4" CONDUIT SLEEVES FOR TELECOMMUNICATIONS CABLING THROUGH THE IT ROOM WALLS.
- PROVIDE 24" L X 4" H MAIN TELECOMMUNICATION BONDING BUSBAR MOUNTED AT 18" AFF.
- PROVIDE 4" X 8" X 3/4" TECHNOLOGY PLYWOOD BACKBOARD ON IT ROOM WALLS.
- PROVIDE WALL MOUNTED ACS PANEL WITH A SINGLE CAT6 CABLE CONNECTION. COORDINATE WITH THE SECURITY CONTRACTOR FOR THE EXACT LOCATION.



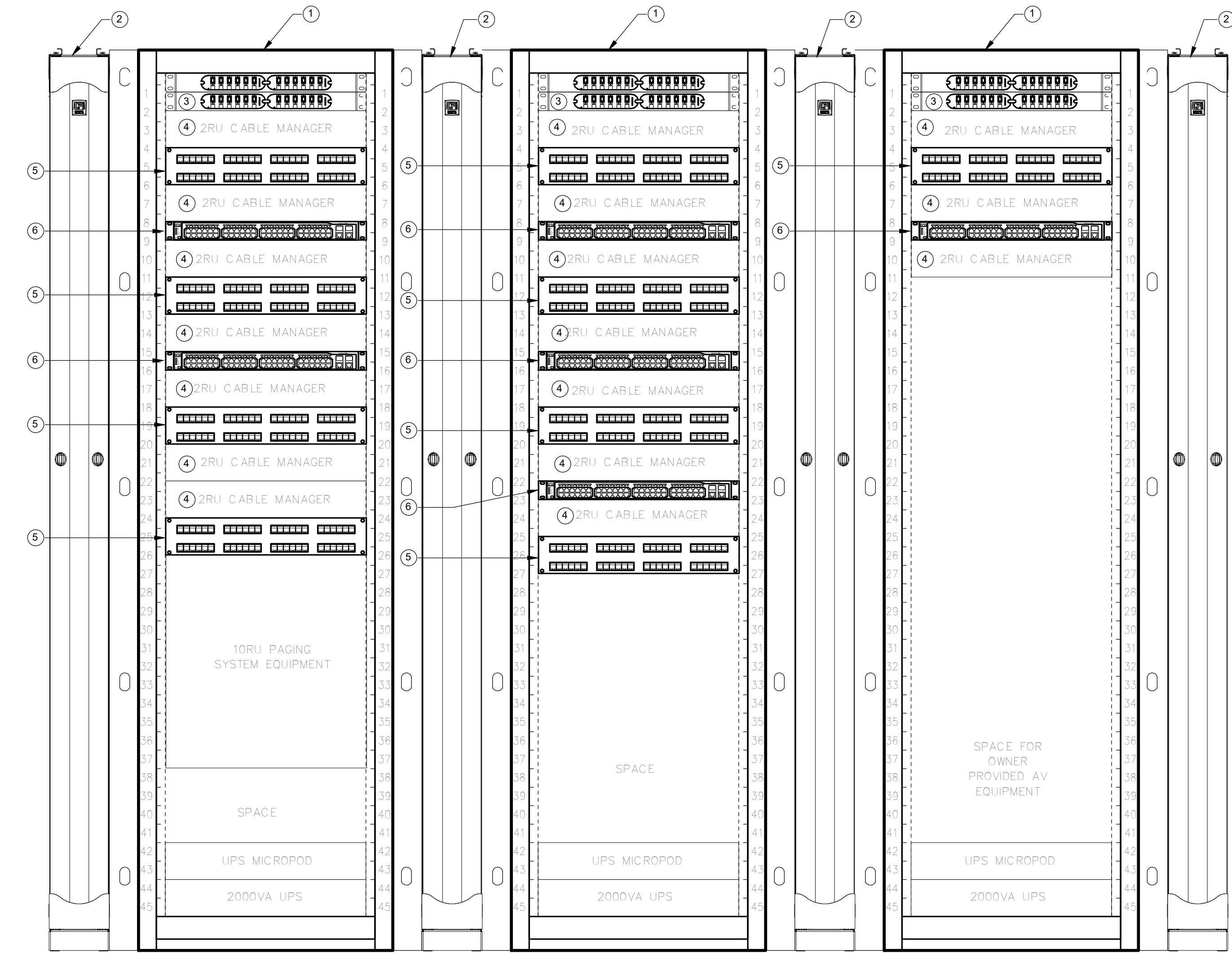
2 ENLARGED PLAN - IT 162 - TECHNOLOGY  
1/2" = 1'-0"



1 ENLARGED PLAN - IT 151 - TECHNOLOGY  
1/2" = 1'-0"



4 FIRST FLOOR PLAN - P/A PAGING ZONES  
3/8" = 1'-0"



3 DETAIL - IT ROOM 162 RACK ELEVATIONS  
1/8" = 1'-0"

**SHEET KEYNOTES:**

- 84" H X 20" W X 30" D 4-POST RACK WITH EIA STANDARD 19" RACK RAILS. 45 RACK UNITS OF MOUNTING SPACE.
- 6" WIDE VERTICAL WIRE MANAGEMENT ON EACH SIDE OF THE RACK.
- 48 PORT, 2RU FIBER OPTIC DISTRIBUTION PANEL.
- 2RU HORIZONTAL CABLE MANAGEMENT.
- 2RU, 48 PORT COPPER PATCH PANEL.
- 1RU, 48 PORT NETWORK SWITCH.



PROGRESS PRINTS  
NOT FOR  
CONSTRUCTION

**Bostwick  
Design  
Partnership**  
Cleveland, OH | Erie, PA | Harrisburg, PA  
www.bostwickdesign.com

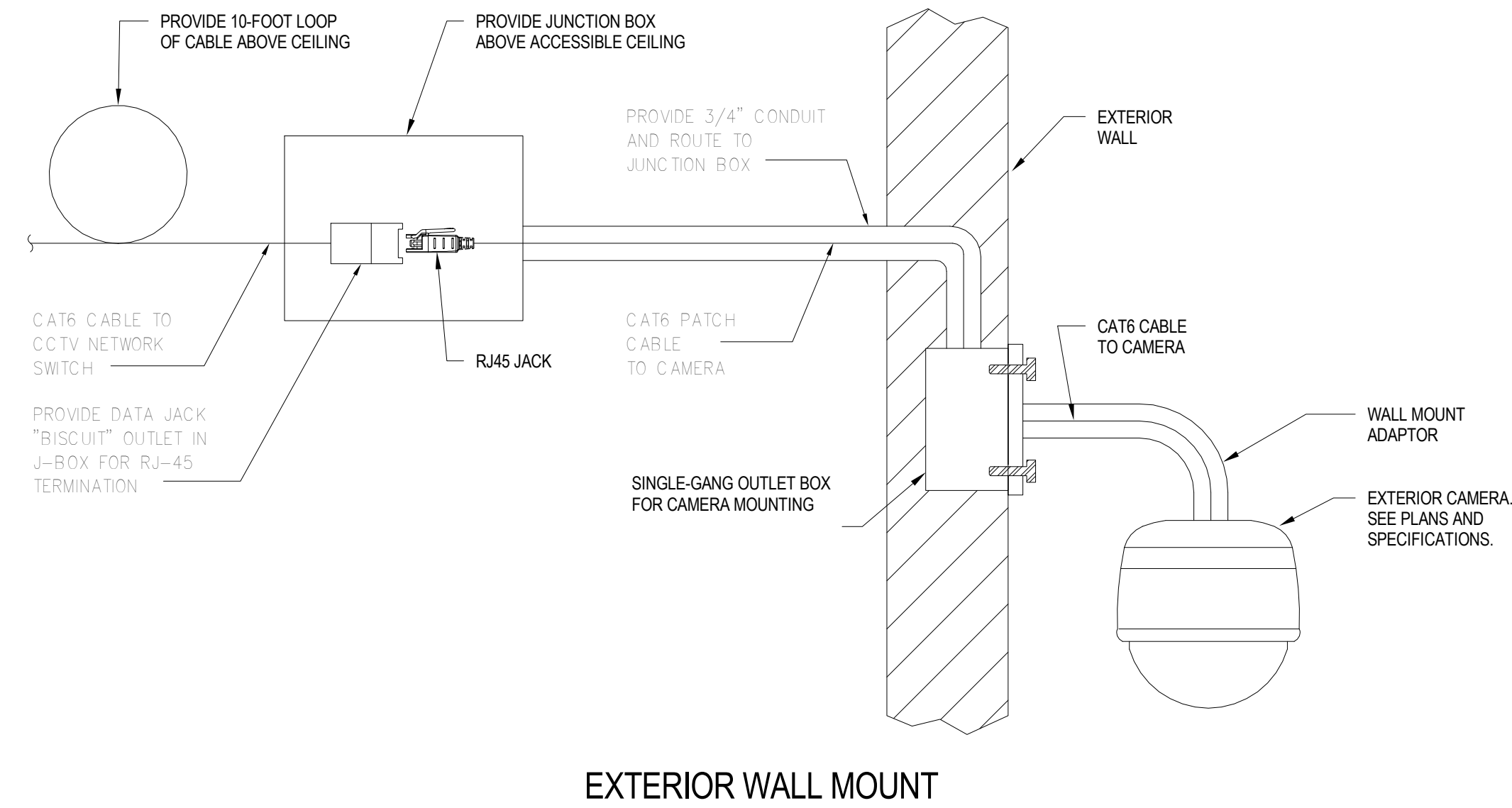
BDP NO. 22007

**COLUMBUS  
METROPOLITAN  
LIBRARY**  
CANAL WINCHESTER  
BRANCH

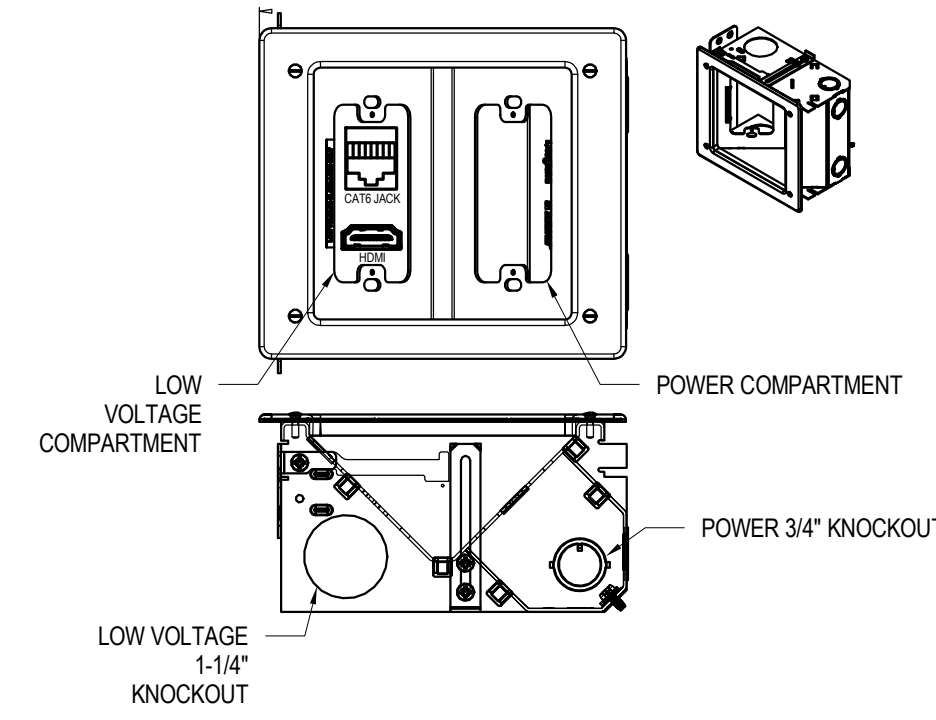
ISSUED/ REVISED FOR	DATE
SCHEMATIC DESIGN	12 MAY 2023
INTERIM DD	27 OCT 2023
DESIGN DEVELOPMENT	08 DEC 2023
INTERIM CD	13 MAR 2024

ENLARGED PLANS -  
TECHNOLOGY

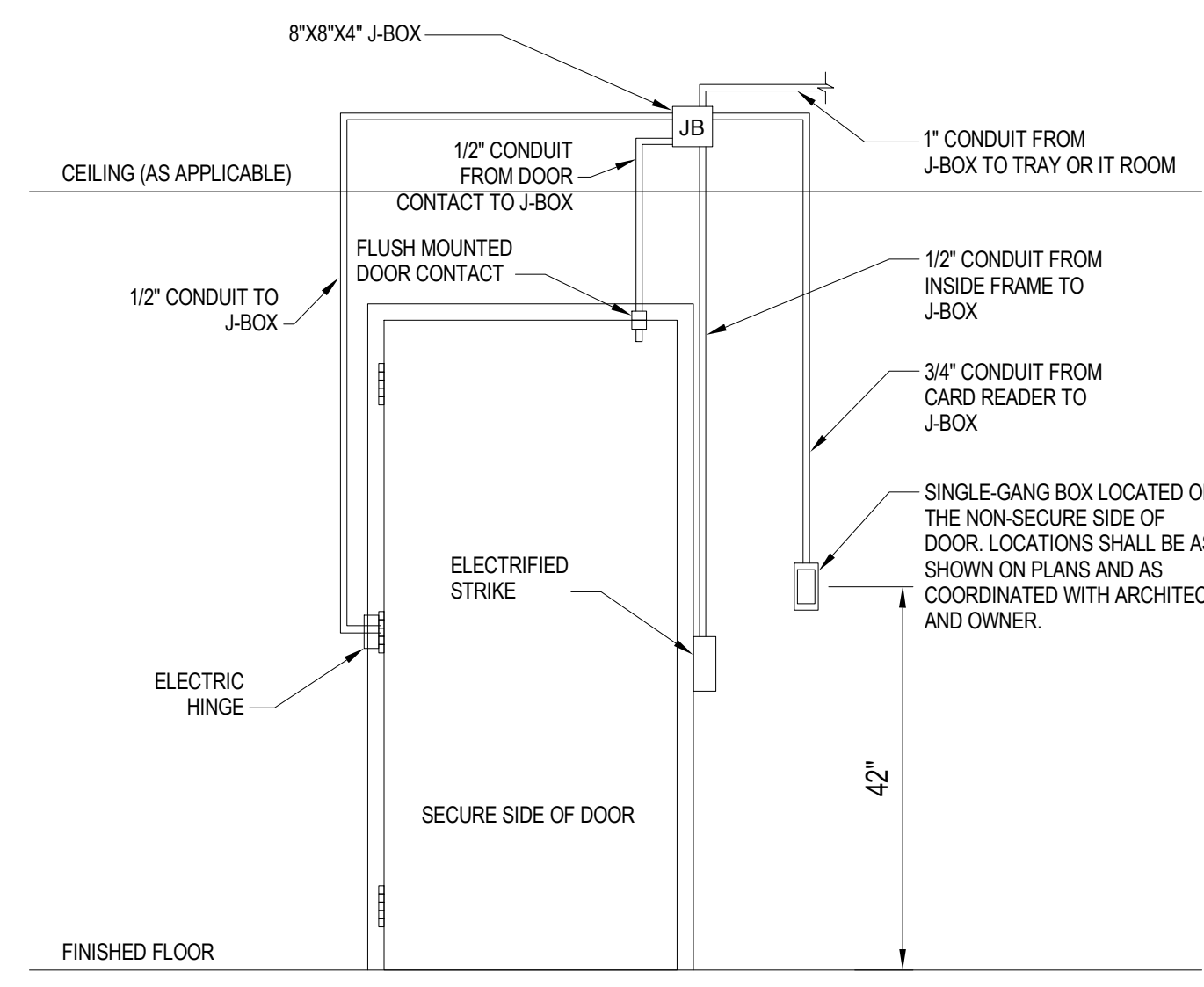
SHEET NO. T401



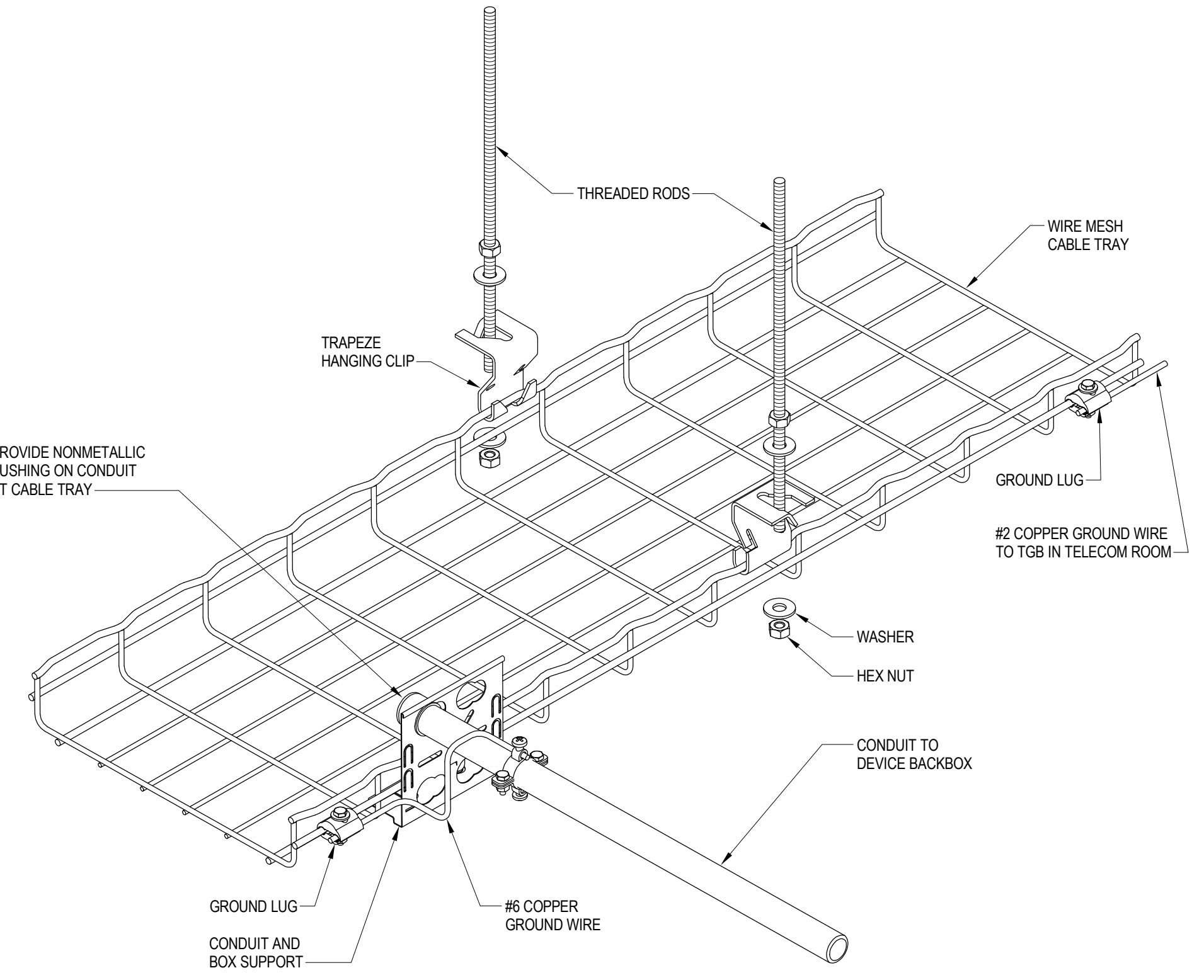
7 DETAIL - CCTV CAMERA MOUNTING  
NTS



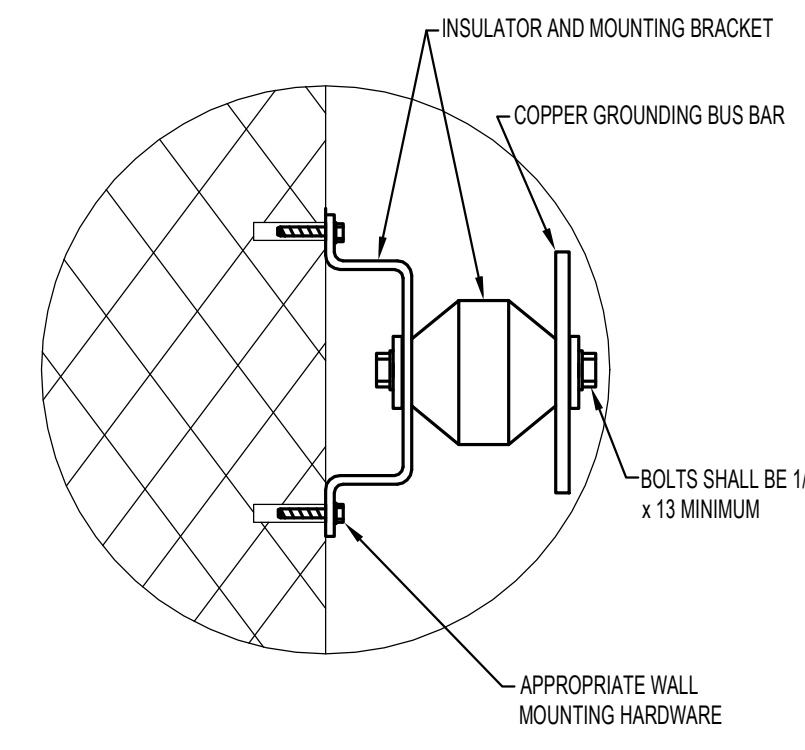
11 DETAIL - RECESSED DUAL SERVICE OUTLET  
NTS



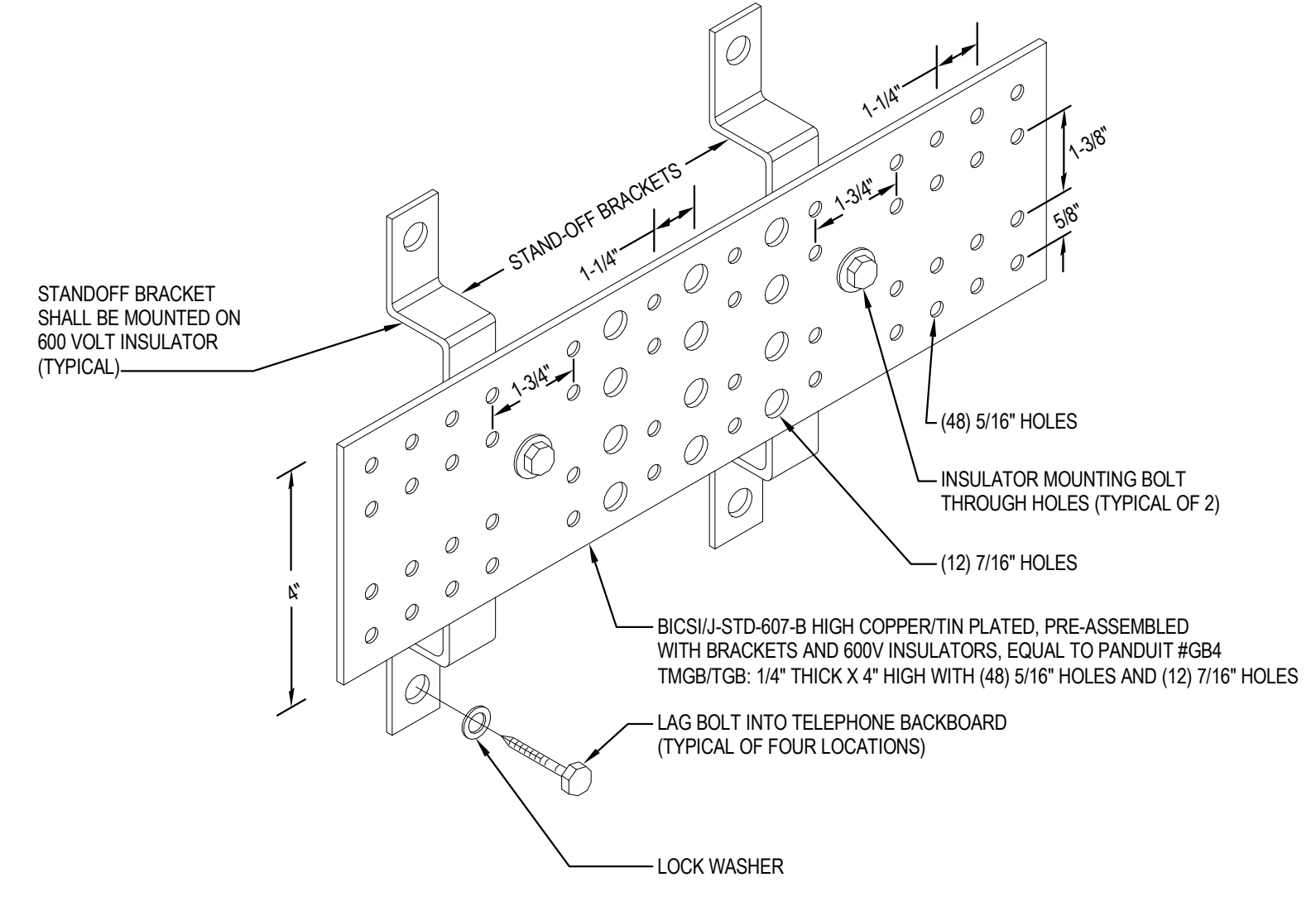
6 DETAIL - ACS DOOR DEVICE  
NTS



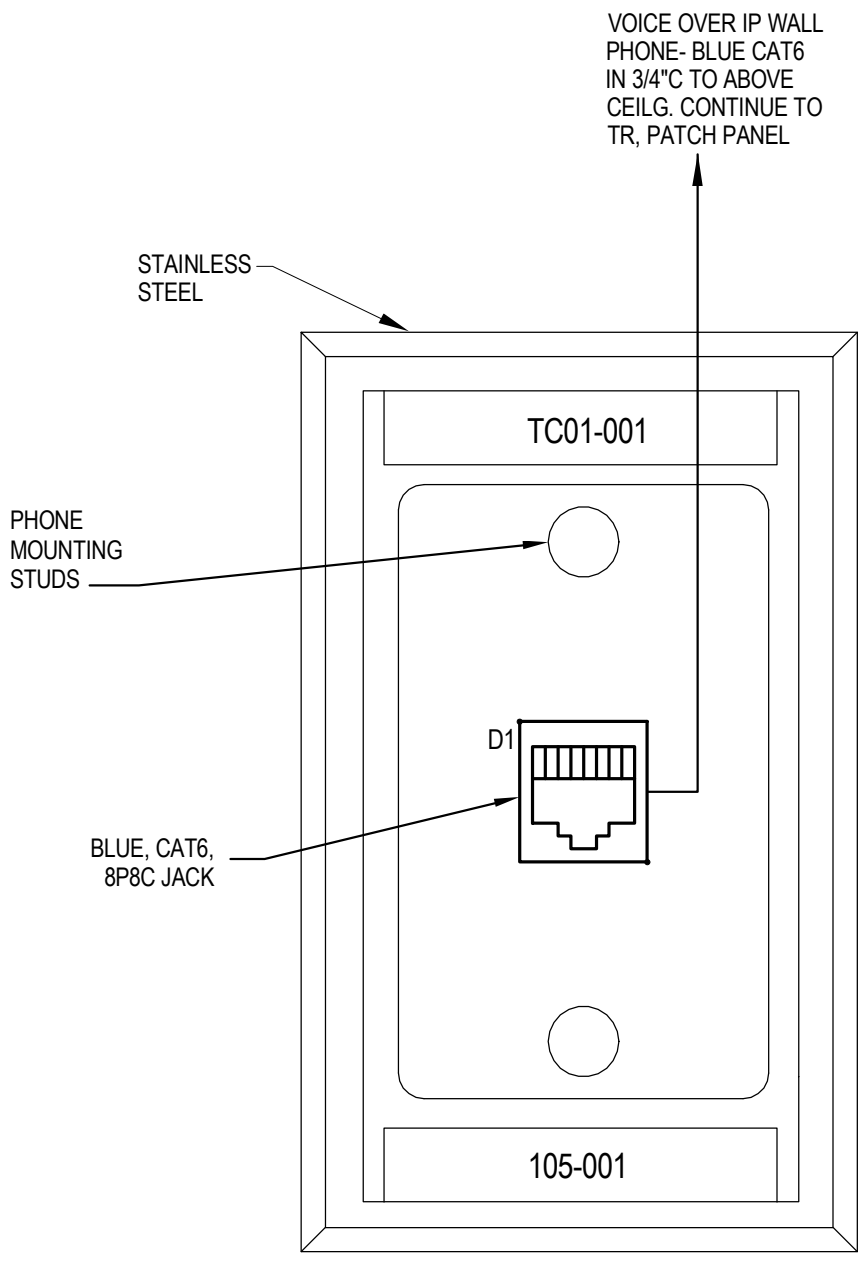
2 DETAIL - CABLE TRAY MOUNTING  
12" = 1'-0"



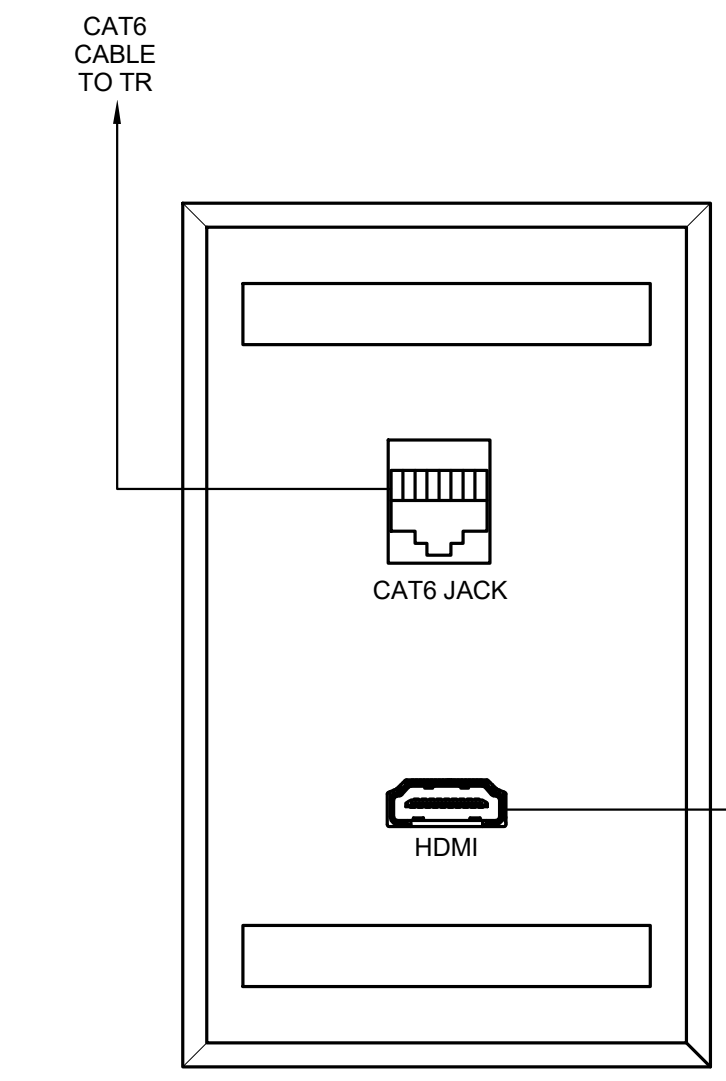
1 DETAIL - BUS BAR MOUNTING  
NTS



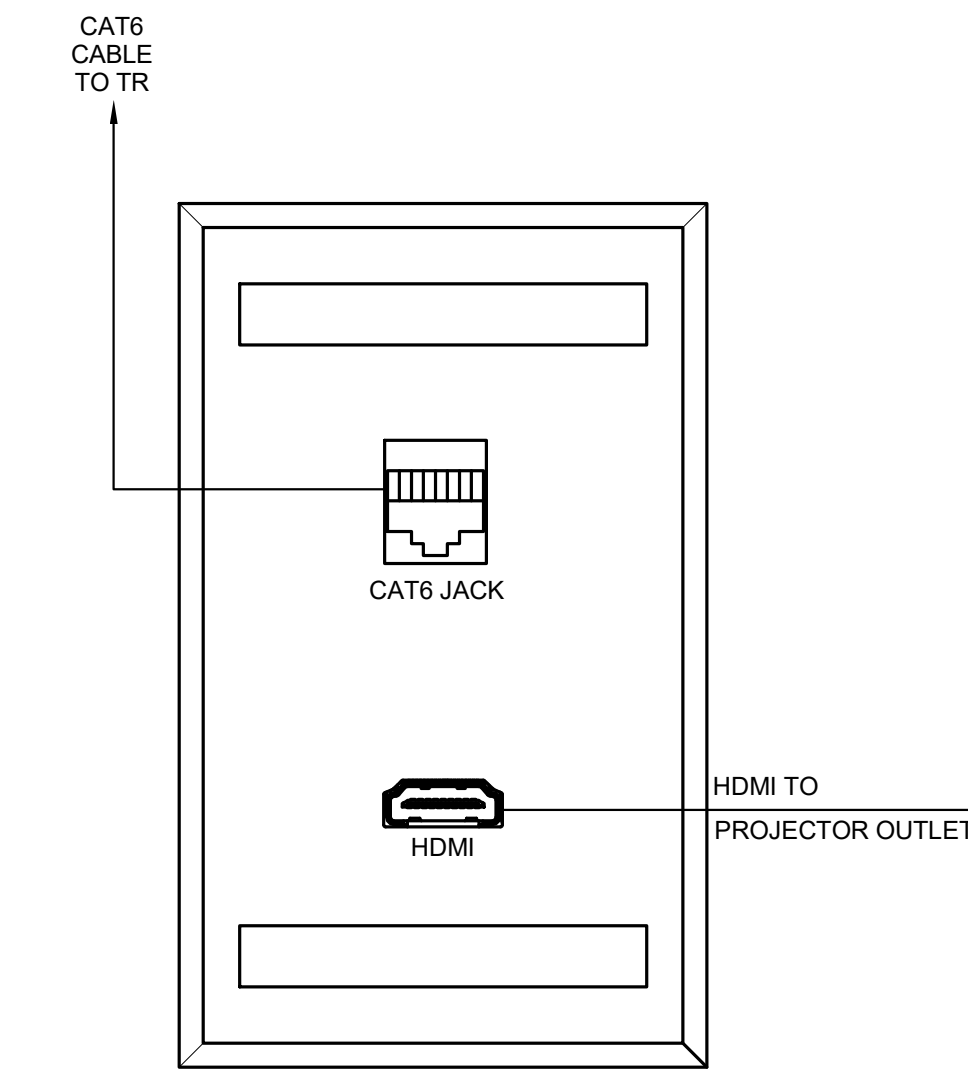
4 DETAIL - TMGB & TGB  
12" = 1'-0"



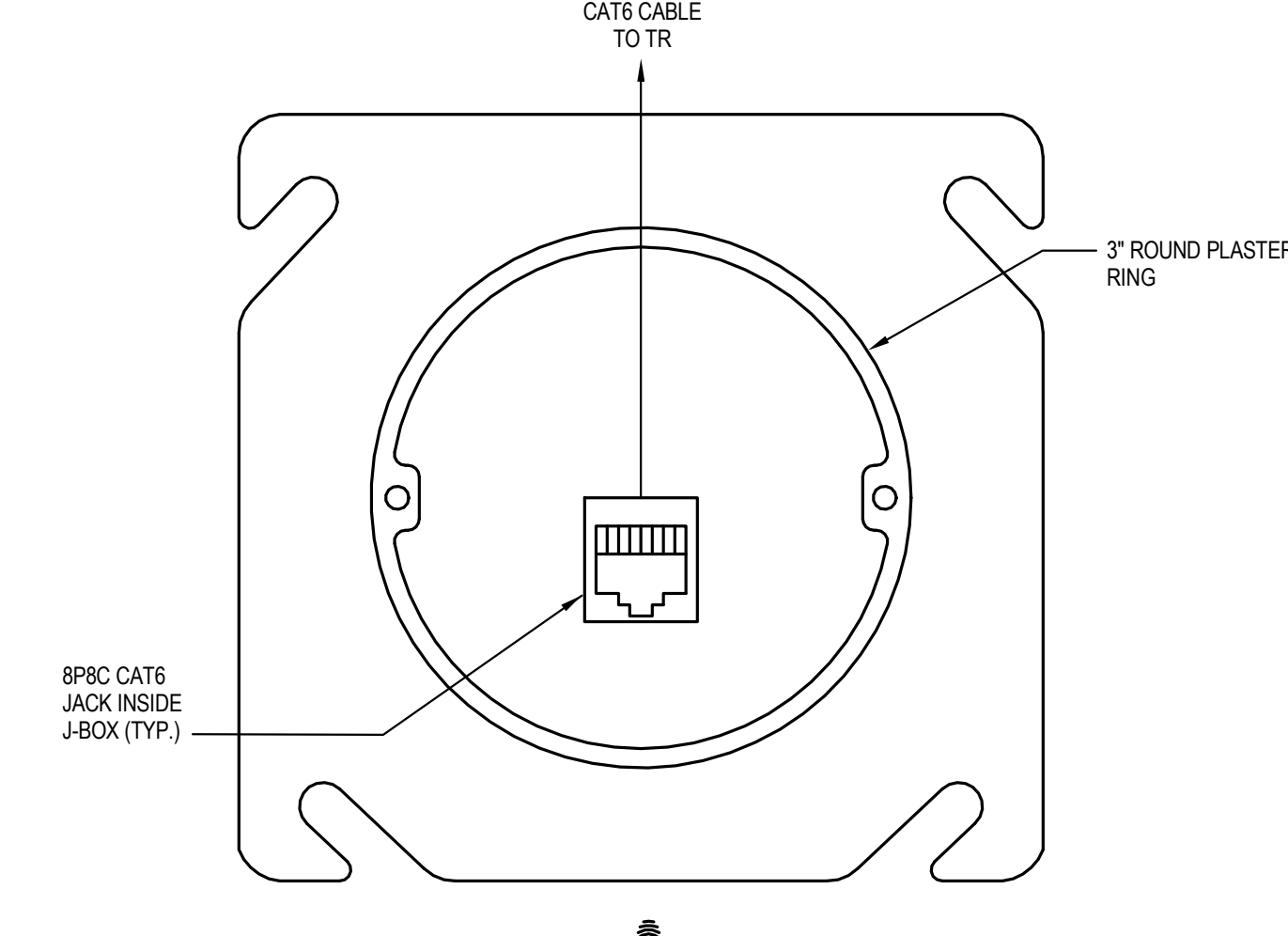
10 DETAIL - WALL PHONE FACEPLATE  
12" = 1'-0"



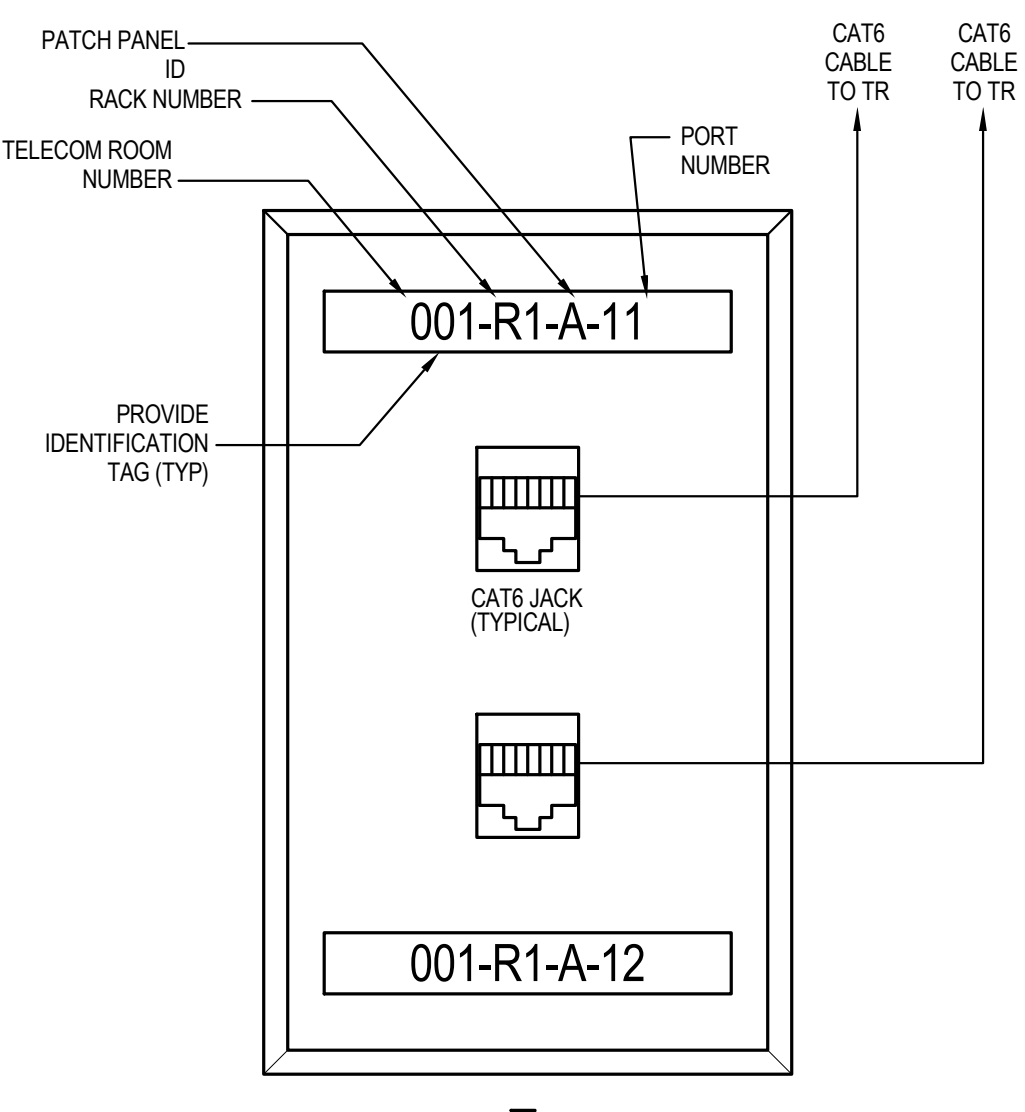
9 DETAIL - TV FACEPLATE  
NTS



8 DETAIL - HDMI FACEPLATE  
NTS



5 DETAIL - WIRELESS ACCESS POINT OUTLET  
12" = 1'-0"



3 DETAIL - GENERAL DATA FACEPLATE  
12" = 1'-0"

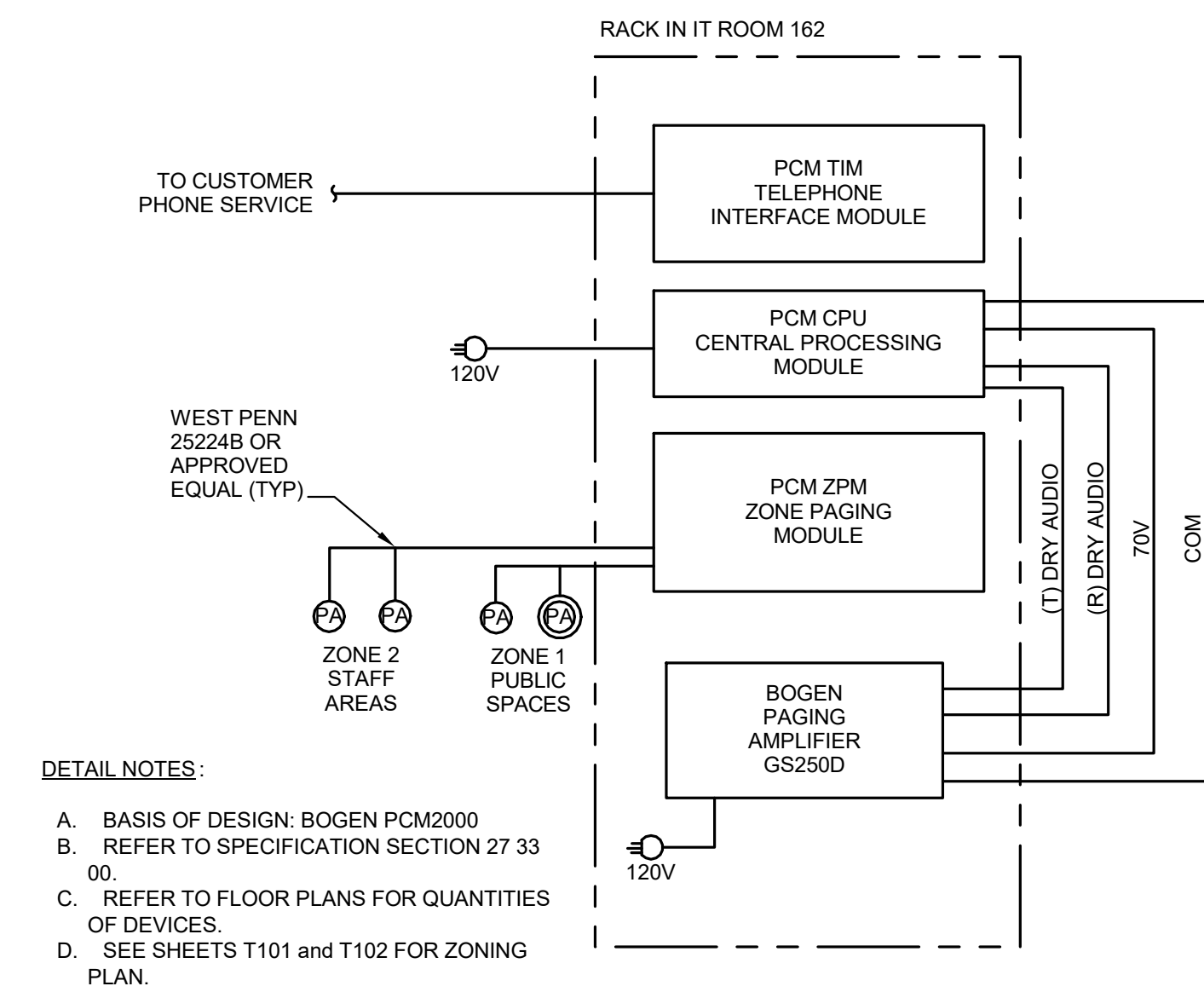
PROGRESS PRINTS  
NOT FOR  
CONSTRUCTION

**Bostwick  
Design  
Partnership**  
Cleveland, OH | Erie, PA | Miami, FL | Pittsburgh, PA  
www.bostwickdesign.com

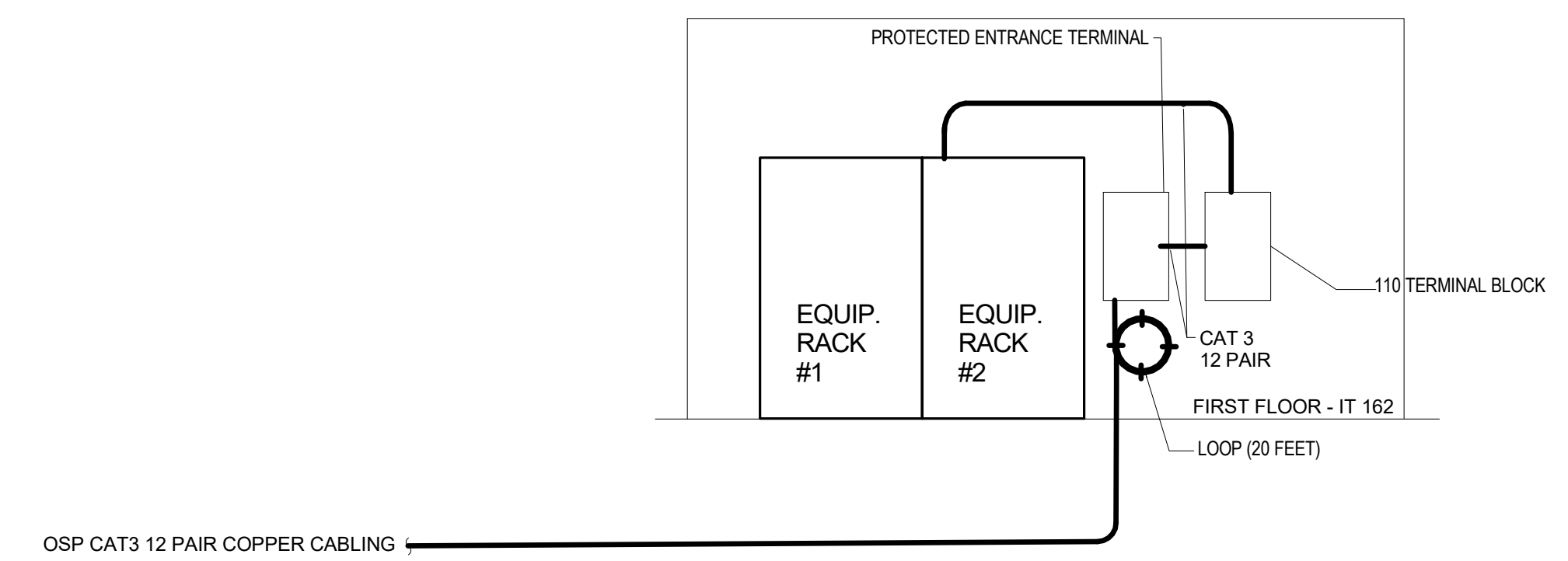
COLUMBUS  
METROPOLITAN  
LIBRARY  
CANAL WINCHESTER  
BRANCH

ISSUED/ REVISED FOR	DATE
SCHEMATIC DESIGN	12 MAY 2023
INTERIM DD	27 OCT 2023
DESIGN DEVELOPMENT	08 DEC 2023
INTERIM CD	13 MAR 2024

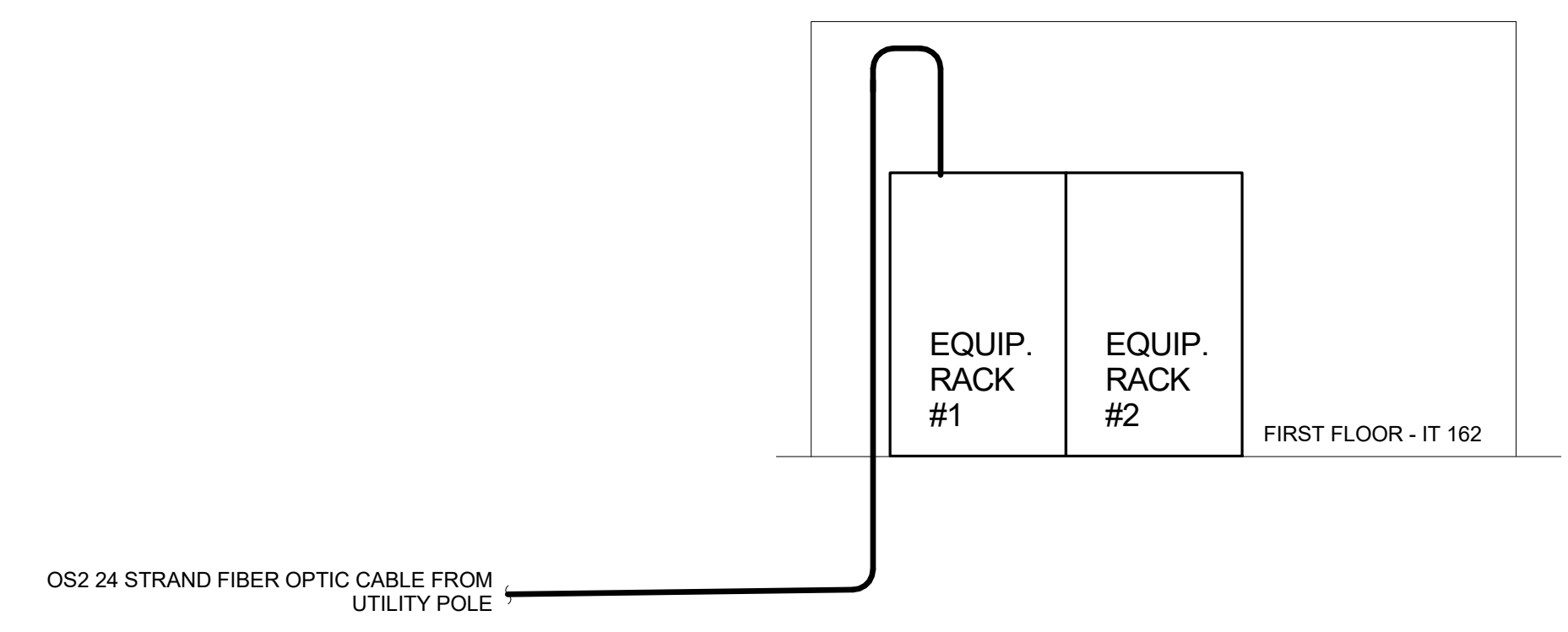
DETAILS -  
TECHNOLOGY



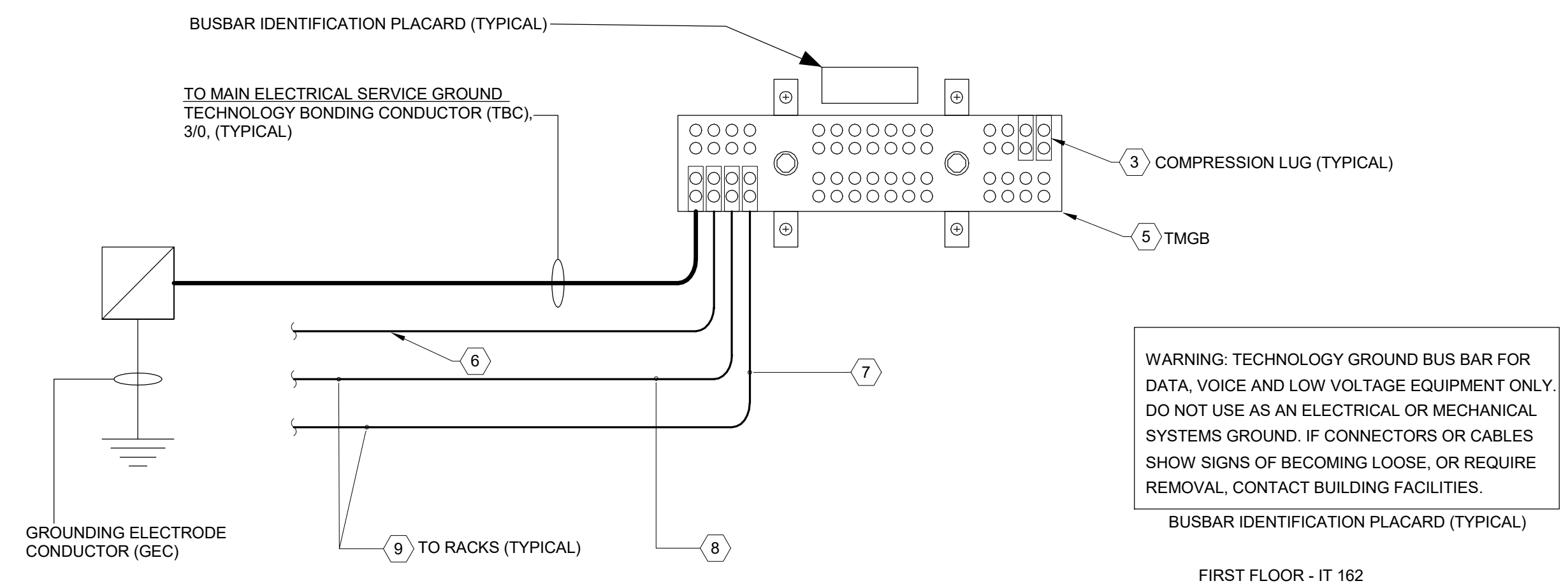
4 DIAGRAM - PAGING SYSTEM RISER



1 DIAGRAM - COPPER RISER



2 DIAGRAM - FIBER RISER



NOTES:

1. WITH THE EXCEPTION OF THE MAIN ELECTRICAL SERVICE GROUND, ALL BONDING CONDUCTOR SIZES ARE SHOWN FOR REFERENCE ONLY. ACTUAL SIZE OF EACH BONDING CONDUCTOR SHALL BE BASED ON ITS LENGTH AS SPECIFIED BY THE TIA 607-C. ALL BONDING CONDUCTORS SHALL BE INSULATED.

2. ALL TECHNOLOGY BUSBARS SHALL HAVE AN ENGRAVED PLACARD AFFIXED DIRECTLY ABOVE THE BUSBAR, SEE ABOVE TYPICAL PLACARD FOR WORDING.

3. EACH GROUNDING AND BONDING CONDUCTOR SHALL BE LABELED AT ITS POINT OF TERMINATION WITH THE FOLLOWING INFORMATION, "IF THIS CONNECTOR OR CABLE IS LOOSE OR MUST BE REMOVED, PLEASE NOTIFY BUILDING FACILITIES IMMEDIATELY".

3 DIAGRAM - GROUNDING RISER

SEAL

PROGRESS PRINTS  
NOT FOR  
CONSTRUCTION

**Bostwick  
Design  
Partnership**

Cleveland, OH | Erie, PA | Miami, FL | Pittsburgh, PA  
www.bostwickdesign.com

BDP NO. 22007

**COLUMBUS  
METROPOLITAN  
LIBRARY**

CANAL WINCHESTER  
BRANCH

ISSUED/ REVISED FOR	DATE
SCHEMATIC DESIGN	12 MAY 2023
INTERIM DD	27 OCT 2023
DESIGN DEVELOPMENT	08 DEC 2023
INTERIM CD	13 MAR 2024

\_\_\_\_\_

\_\_\_\_\_

\_\_\_\_\_

\_\_\_\_\_

\_\_\_\_\_

\_\_\_\_\_

\_\_\_\_\_

\_\_\_\_\_

\_\_\_\_\_

\_\_\_\_\_

DIAGRAMS -  
TECHNOLOGY



**GENERAL NOTES**

- A. CEILING GRIDS TO BE CENTERED IN ROOM UNLESS NOTED OTHERWISE.
- B. ALL CEILING MOUNTED DEVICES TO BE CENTERED IN CEILING TIE UNLESS NOTED OTHERWISE.
- C. ALL GYPSUM BOARD CEILINGS & SOFFITS TO BE PAINTED. REFER TO FINISH SCHEDULE.
- D. WHERE CEILINGS ARE TO BE LEFT EXPOSED TO UNDERSIDE OF STRUCTURE, THE UNDERSIDE OF DECK, BEAMS, DIFFUSERS, AND ALL EXPOSED MEP SYSTEMS ARE TO BE PAINTED. ALL EXPOSED CABLING SHALL BE RUN IN CONDUIT AND FOR NEATLY BUNDLED AND HELD TIGHT TO UNDERSIDE OF STRUCTURE WHERE PERMITTED BY CODE AND ELECTRICAL SPECIFICATION. ALL WALL PENETRATIONS OF CONDUIT OR CABLING WITHIN EXPOSED CEILING AREAS SHALL BE NEATLY GROMMETED AND/OR SEALED WHERE REQUIRED BY CODE.
- E. COORDINATE ALL CONNECTIONS TO UNDERSIDE OF DECKING WITH STRUCTURAL DRAWINGS. PROVIDE UNISTRUT CHANNEL AS REQUIRED.
- F. CONTRACTOR TO VERIFY THAT ACCESS PANELS OF APPROPRIATE SIZE AND TYPE TO ACCESS AND SERVICE EQUIPMENT SHALL BE INSTALLED IN GYPSUM BOARD OR OTHER NON-ACCESSIBLE CEILING OR SOFFITS WHERE ACCESS TO MEP ITEMS MAY BE NEEDED. COORDINATE LOCATION OF ACCESS PANELS WITH ARCHITECT PRIOR TO INSTALLATION.
- G. OWNER AND ARCHITECT TO APPROVE ALL HEIGHTS OF HANGING LIGHT FIXTURES PRIOR TO INSTALLATION.

**LEGEND**

- ACP-# ZM4 ACOUSTIC CEILING PANEL, REF FINISH SCHEDULE FOR TYPE
- GWB, GYPSUM BOARD CEILING
- GWB, GYPSUM BOARD CEILING, 1-HR RATED, DESIGN NO. UL1415
- WOOD FEATURE CEILING, BOB EXTERIOR, PURE & FREEFORM BOB INTERIOR, MCM ACOUSTIC
- FAB-3, ACOUSTIC CEILING BAFFLE
- PAINTED EXPOSED STRUCTURE, REF STRUCTURAL DRAWINGS
- LIGHT FIXTURES TYPICAL, REFER TO ELECTRICAL DRAWINGS
- MECHANICAL DIFFUSERS, REFER TO MECHANICAL DRAWINGS
- SPEAKER, REFER TO TECHNOLOGY DRAWINGS
- EXIT SIGNS, REFER TO ELECTRICAL DRAWINGS
- SPRINKLER HEAD, REFER TO FIRE PROTECTION DRAWINGS
- RWS-1 ROLLER WINDOW SHADE

PROGRESS PRINTS  
NOT FOR  
CONSTRUCTION

**Bostwick  
Design  
Partnership**

Cleveland, OH | Erie, PA | Miami, FL | Pittsburgh, PA  
www.bostwickdesign.com

BDP NO. 22007

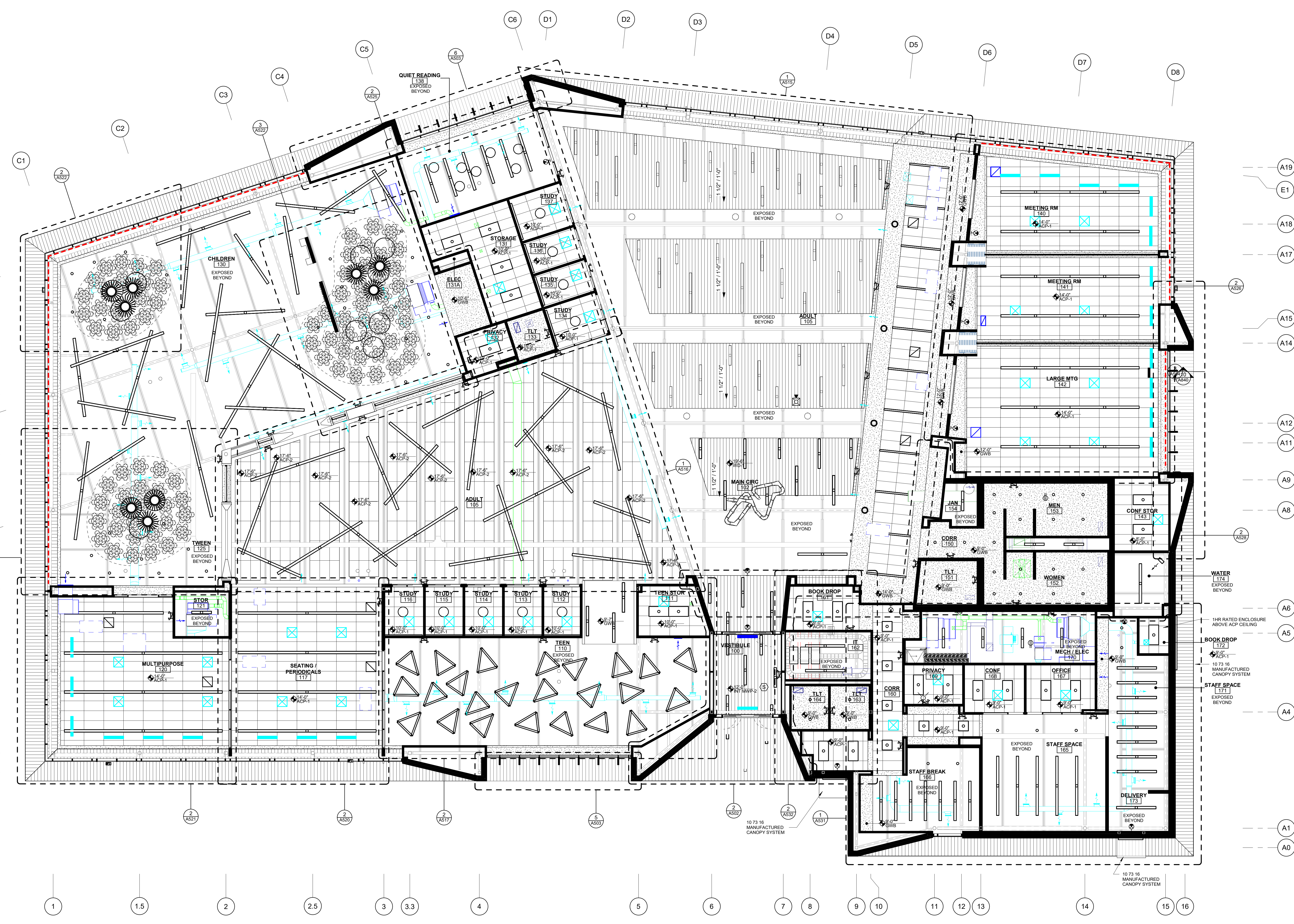
**COLUMBUS  
METROPOLITAN  
LIBRARY**

CANAL WINCHESTER  
BRANCH

ISSUED/REVISED FOR	DATE
SCHEMATIC DESIGN	12 MAY 2023
INTERIM DD	27 OCT 2023
DESIGN DEVELOPMENT	08 DEC 2023
INTERIM CD	13 MAR 2024

FIRST FLOOR  
REFLECTED CEILING  
PLAN

SHEET NO. **A201**



**1** FIRST FLOOR REFLECTED CEILING PLAN  
1/8" = 1'-0"

3/13/2024 9:59:41 AM Autodesk Docs/22007 CML Canal Winchester Branch/CLDW - ARC.rvt

ABBREVIATIONS	
NOTE: NOT ALL ABBREVIATIONS MAY BE USED.	
(A)	EXISTING TO BE ABANDONED
(D)	EXISTING TO BE DEMOLISHED
(E)	EXISTING TO REMAIN
(F)	FUTURE
(R)	EXISTING TO BE RELOCATED
A	AMPERE
AC	ALTERNATING CURRENT OR AIR CONDITIONER
AFF	ABOVE FINISHED FLOOR
AFG	ABOVE FINISHED GRADE
AIC	AMPS INTERRUPTING CAPACITY
ANNC	ANNUNCIATOR
AWG	AMERICAN WIRE GAUGE
BPS	BOLTED PRESSURE SWITCH
C	CONDUIT
CB	CIRCUIT BREAKER
CCTV	CLOSED CIRCUIT TELEVISION
CKT	CIRCUIT
CM	CONSTRUCTION MANAGER
DC	DIRECT CURRENT
DP	DISTRIBUTION PANELBOARD
DTT	DOUBLE TWIN TUBE
EB	ELECTRONIC BALLAST
EC	ELECTRICAL CONTRACTOR
EM	EMERGENCY
EMT	ELECTRICAL METAL TUBING
EWC	ELECTRIC WATER COOLER
FA	FIRE ALARM
FLA	FULL LOAD AMPS
G	GROUND
GC	GENERAL TRADES CONTRACTOR
GF	GROUND FAULT CIRCUIT INTERRUPTER
GEN	GENERATOR
HOA	HAND-OFF-AUTOMATIC
HP	HORSEPOWER
HPC	HIGH PRESSURE CONTACT SWITCH
HZ	HERTZ
IG	ISOLATED GROUND
IMC	INTERMEDIATE METAL CONDUIT
INCD	INCANDESCENT
KVA	KILOVOLT AMPERE
KW	KILOWATT
LTG	LIGHTING OR LIGHT
LRA	LOCKED ROTOR AMPS
MCA	MINIMUM CIRCUIT AMPACITY
MCB	MAIN CIRCUIT BREAKER
MCC	MOTOR CONTROL CENTER
MDP	MAIN DISTRIBUTION PANEL
MLO	MAIN LUGS ONLY
MOCP	MAXIMUM OVERCURRENT PROTECTION
MSB	MAIN SWITCHBOARD
MH	MOUNTING HEIGHT
MTS	MANUAL TRANSFER SWITCH
NAC	NOTIFICATION APPLIANCE CIRCUIT
NC	NORMALLY CLOSED
NO	NORMALLY OPEN
NF	NON-FUSED
OCC	OCCUPANCY
PA	PUBLIC ADDRESS
PB	PULL BOX OR PUSH BUTTON
PVC	POLYVINYL CHLORIDE (PLASTIC PIPE)
PWR	POWER
RECPT	RECEPTACLE
STP	SHIELDED, TWISTED PAIR
TC	TIME CLOCK
TRT	TRIPLE TUBE
TYP	TYPICAL
UNO	UNLESS NOTED OTHERWISE
UTP	UNSHIELDED, TWISTED PAIR
V	VOLT
W	WATT
WAP	WIRELESS ACCESS POINT
WH	WATTHOUR
WP	WEATHERPROOF, NEMA 3R UNO
XFMR	TRANSFORMER
Z	IMPEDANCE
□	PHASE

LIGHTING SYMBOLS	
NOTE: NOT ALL SYMBOLS MAY BE USED.	
	GENERAL PURPOSE LUMINAIRE: REFER TO LUMINAIRE SCHEDULE FOR ADDITIONAL INFORMATION
	GENERAL PURPOSE LUMINAIRE ON EMERGENCY POWER: REFER TO LUMINAIRE SCHEDULE FOR ADDITIONAL INFORMATION
	ROUND LUMINAIRE: REFER TO LUMINAIRE SCHEDULE FOR ADDITIONAL INFORMATION
	WALL MOUNTED: REFER TO LUMINAIRE SCHEDULE FOR ADDITIONAL INFORMATION
	TRACK LIGHTING
	TRACK LIGHTING HEAD
	REMOTE HEAD
	STEP LIGHT
	EMERGENCY LIGHT
	EXIT SIGN
	CEILING MOUNTED ILLUMINATED EXIT SIGN WITH DIRECTIONAL ARROWS
	EMERGENCY DUAL FACE ILLUMINATED EXIT SIGN WITH DIRECTIONAL ARROWS
	EXIT SIGN WITH INTEGRAL HEADS
	LINE VOLTAGE SWITCH: X=BLANK-SINGLE POLE 20A, TOGGLE; X=3-THREE WAY; X=4-FOUR WAY; X=P-PILOT LIGHT; X=OS-OCCUPANCY; X=DS,D-COMBO DIMMER OCCUPANCY
	PHOTOCCELL
	LOW VOLTAGE SWITCH: X=1-TWO BUTTON ON/OFF; X=2-FOUR BUTTON ON/OFF - RAISE/LOWER; X=3-SIX BUTTON ON/OFF - RAISE/LOWER
	TOUCH SCREEN MULTI ZONE CONTROLLER WITH RS232 AV INPUT
	CEILING MOUNTED OCCUPANCY SENSOR: X=BLANK-DUAL TECHNOLOGY; X=IR-PASSIVE INFRARED; X=US-ULTRASONIC; X=WP-EXTERIOR/EXTREME TEMP RATED
	POWER PACK
	JUNCTION BOX
	PANELBOARD
	LIGHTING CONTROL PANEL
	LOW VOLTAGE TRANSFORMER

POWER SYMBOLS	
NOTE: NOT ALL SYMBOLS MAY BE USED.	
	20A DUPLEX RECEPTACLE WITH COVER PLATE: X=MOUNTING HEIGHT (STANDARD = 18" TO CENTER); F=FLUSHED IN FLOOR, C= FLUSHED IN CEILING
	GFCI (GROUND FAULT CIRCUIT INTERRUPTER) TYPE RECEPTACLE
	WEATHER-RESISTANT, GFCI RECEPTACLE WITH "EXTRA DUTY" WEATHERPROOF IN-USE COVER
	USB TYPE RECEPTACLE WITH TAMPER RESISTANT
	TAMPER RESISTANT RECEPTACLE
	SIMPLEX RECEPTACLE
	QUADRUPLEX RECEPTACLE: SEE DUPLEX RECEPTACLE FOR TYPES
	SURFACE MOUNTED RACEWAY
	STANDARD DISCONNECT SWITCH: X=CIRCUIT BREAKER SIZE, Y=NUMBER OF POLES, Z=SPECIAL DESIGNATION
	STANDARD FUSED DISCONNECT SWITCH: X=CIRCUIT BREAKER SIZE, Y=FUSING, Z=NUMBER OF POLES
	MOTOR STARTER: X=STARTER SIZE, Y=NUMBER OF POLES
	COMBINATION MOTOR STARTER/DISCONNECT SWITCH: X=STARTER SIZE, Y=FUSE SIZE, Z=NUMBER OF POLES
	MOTOR (BY OTHERS): PROVIDE POWER AS INDICATED
	UTILITY METER
	FRACTIONAL HORSEPOWER MANUAL MOTOR STARTER: Z = Z-POLE
	JUNCTION BOX
	SURGE PROTECTIVE DEVICE
	PANELBOARD
	RECESSED 2-GANG FLOOR BOX (POWER ONLY) (WIREMOLD RFB4-FPCTC SERIES OR APPROVED EQUAL) (1) DUPLEX RECEPTACLE (1) EMPTY GANG FOR FUTURE USE
	RECESSED 4-GANG FLOOR BOX (POWER AND DATA) (WIREMOLD RFB4-FPCTC SERIES OR APPROVED EQUAL) (2) DUPLEX RECEPTACLES (2) DATA OUTLETS
	RECESSED 4-GANG FLOOR BOX (POWER AND DATA) (WIREMOLD RFB4-FPCTC SERIES OR APPROVED EQUAL) (3) DUPLEX RECEPTACLES (6) DATA OUTLETS
	RECESSED FLOOR BOX (POWER AND DATA) (WIREMOLD RFB11-FPCTC SERIES OR APPROVED EQUAL), HARDWIRED FURNITURE CONNECTION COORDINATE COVER PLATE WITH ARCHITECT.

FIRE ALARM SYMBOLS	
NOTE: NOT ALL SYMBOLS MAY BE USED.	
	MANUAL PULL STATION (48" AFF TO HANDLE OF DEVICE)
	HEAT DETECTOR
	DUCT MOUNTED HEAT DETECTOR
	SMOKE DETECTOR
	DUCT MOUNTED SMOKE DETECTOR
	SPEAKER (80" AFF TO BOTTOM OF DEVICE)
	SPEAKER WITH STROBE (80" AFF TO BOTTOM OF DEVICE)
	HORN (80" AFF TO BOTTOM OF DEVICE)
	HORN WITH STROBE (80" AFF TO BOTTOM OF DEVICE)
	STROBE (80" AFF TO BOTTOM OF DEVICE)
	WALL MOUNTED STROBE (80" AFF TO BOTTOM OF DEVICE)
	BELL, 120V
	WATER FLOW SWITCH: DIVISION 28 TO PROVIDE
	WATER TAMPER SWITCH: DIVISION 28 TO PROVIDE
	PIV VALVE
	ADDRESSABLE INPUT-OUTPUT MODULE
	ISOLATION MODULE
	MAGNETIC DOOR HOLDER
	FIREMAN'S PHONE
	REMOTE INDICATOR STATION FOR DUCT SMOKE DETECTOR (60" AFF TO CENTERLINE)
	WALL MOUNTED REMOTE INDICATOR STATION FOR DUCT SMOKE DETECTOR (60" AFF TO CENTERLINE)
	REMOTE INDICATOR TEST SWITCH
	FAN SHUT-DOWN RELAY
	FIRE ALARM ANNUNCIATOR PANEL
	FIRE ALARM CONTROL PANEL
	NOTIFICATION APPLIANCE CIRCUIT PANEL

LINE TYPE LEGEND	
	EXISTING TO REMAIN
	EXISTING TO BE REMOVED
	NEW WORK

SEAL

PROGRESS PRINTS  
NOT FOR  
CONSTRUCTION

**Bostwick  
Design  
Partnership**

Cleveland, OH | Erie, PA | Harrisburg, PA | Pittsburgh, PA  
www.bostwickdesign.com

BOP NO. 22007

**COLUMBUS  
METROPOLITAN  
LIBRARY**

**CANAL WINCHESTER  
BRANCH**

ISSUED/ REVISION FOR	DATE
SCHEMATIC DESIGN	12 MAY 2023
INTERIM DD	27 OCT 2023
DESIGN DEVELOPMENT	08 DEC 2023
INTERIM CD	13 MAR 2024

GENERAL  
INFORMATION -  
ELECTRICAL

SHEET NO. **E001**



