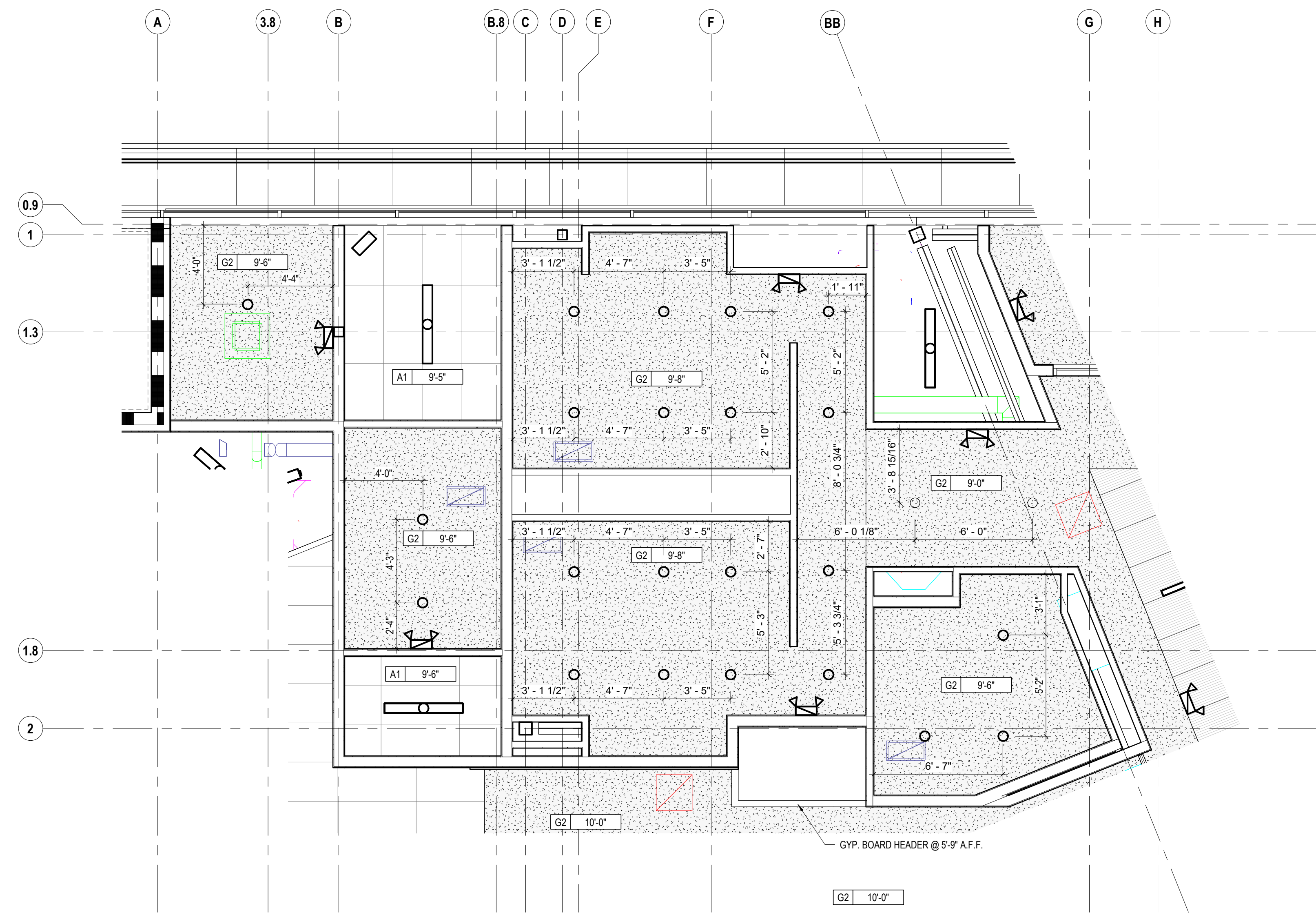
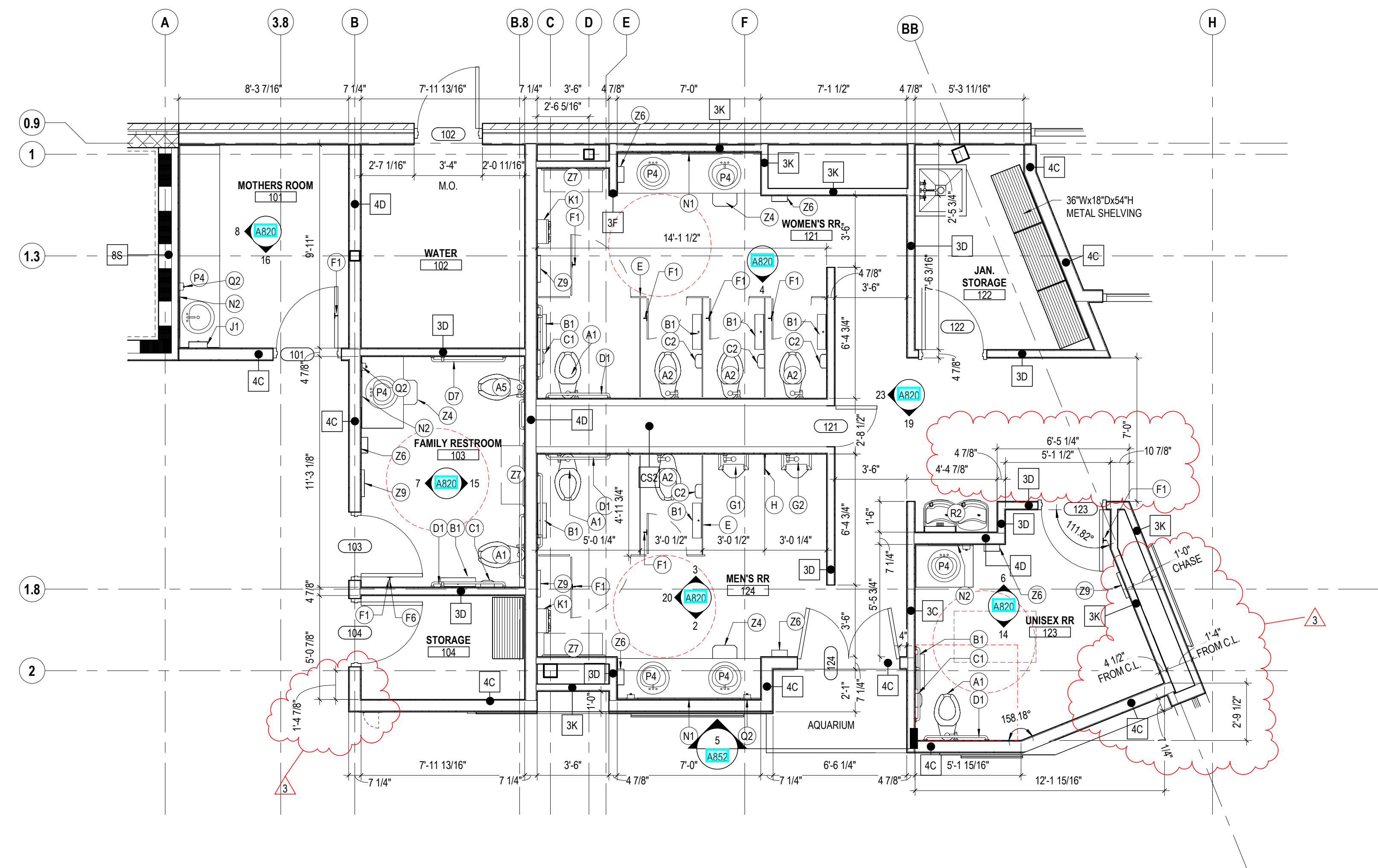


© 2021 MOODY-NOLAN INC. PRINT DATE: 11/22/23 11:10:01 AM FILE INFO: Autodesk Docs/21507 CML Linden Branch - R221507 CML Linden Branch - ARCH.rvt




5 RCP RESTROOM CORE LEVEL 01
1/4" = 1'-0"




4 PLAN MAIN RESTROOM CORE
1/4" = 1'-0"

GENERAL NOTES - ENLARGED PLANS		KEYNOTE LEGEND		#	DATE	CHANGE DESCRIPTION
1. SEE MOUNTING HEIGHT SCHEDULE ON SHEET A810		KEY VALUE	KEYNOTE TEXT	1	7/28/24	BULLETIN 005
2. ALL DIMENSIONS ARE TO FACE OF WALL (UNLESS NOTED OTHERWISE).				2	09/13/24	BULLETIN 008
3. SEE STRUCTURAL DRAWINGS FOR LOCATIONS OF ALL STEEL REINFORCING IN WALL & FLOOR CONSTRUCTION.				3	01/17/25	ASH-001
4. SEE FINISH SCHEDULE FOR ADDITIONAL INFORMATION OF LOCATIONS AND TYPES OF FINISH MATERIALS.						
5. PROVIDE IN-WALL BLOCKING FOR ALL TOILET ACCESSORIES, GRAB BARS, ADJUSTABLE SHELVING, FIRE EXTINGUISHERS, TV MONITORS, ART WORK, CASEWORK, ETC. SEE INTERIOR ELEVATIONS FOR LOCATIONS OF TV MONITORS, ART WORK AND CASWORK						
CODED NOTES - ENLARGED PLANS						
1. X						

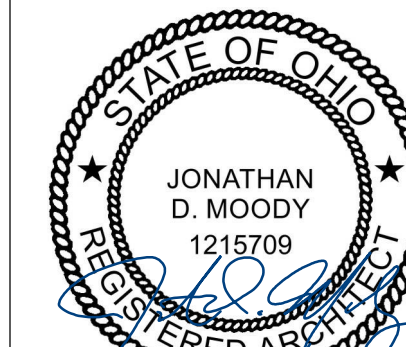


CML LINDEN BRANCH
2223 CLEVELAND AVE
COLUMBUS, OH 43211
FOR
COLUMBUS METROPOLITAN LIBRARY



300 SPRUCE STREET
SUITE 300
COLUMBUS, OHIO 43215
PHONE: (614) 461-4664
FAX: (614) 280-8881

DRAWING TITLE: **ENLARGED PLANS**



JONATHAN D. MOODY
1215709
REGISTERED ARCHITECT

NOVEMBER 21, 2023
DRAWN BY: LM CHECKED BY: BL
Proj. # 21507.02
A811
PERMIT SET